

PEDRALI®

Beauty,
tradition
and innovation

Finishes index

Indice delle finiture

PRODUCT NAME NOME PRODOTTO	PAGE PAGINA
UPHOLSTERY COLLECTIONS COLLEZIONI IMBOTTITI	
Fabrics / Tessuti	007
Hard Leather / Cuoio	053
Leather / Pelle	048
Simil Leather / Finta pelle	039
Velvet / Velluto	056
POWDER COATED CAST-IRON, STEEL AND ALUMINIUM GHISA, ACCIAIO E ALLUMINIO VERNICIATI	
Indoor / Per uso interno	064
Outdoor / Per uso esterno	067

Material for upholstery and cushions

Rivestimenti per imbottiture e cuscini

	FABRIC	FIRE RETARDANT FABRIC	OUTDOOR FABRIC	GENUINE HARD LEATHER	REGENERATED HARD LEATHER	LEATHER	SIMIL LEATHER	FIRE RETARDANT SIMIL LEATHER	VELVET	FIRE RETARDANT VELVET
Category A	●	●	●	●	●	●	●	●	●	●
Category B	●	●	●	●	●	●	●	●	●	●
Category C	●	●	●	●	●	●	●	●	●	●
Category D	●	●	●	●	●	●	●	●	●	●
Category E	●	●	●	●	●	●	●	●	●	●
Category F	●	●	●	●	●	●	●	●	●	●
Category G	●	●	●	●	●	●	●	●	●	●
Category H	●	●	●	●	●	●	●	●	●	●
Category N	●	●	●	●	●	●	●	●	●	●
Category P	●	●	●	●	●	●	●	●	●	●

Legend

Legenda



Fire-retardant
Ignifugo



Outdoor use
Adatto per uso esterno

washing / lavaggio



Do not wash
Lavaggio a secco



Hand wash
Lavaggio a mano



Wash at max 30°C normal
Lavaggio normale, max 30°C



Wash at max 30°C mild
Lavaggio delicato, max 30°C



Wash at max 40°C normal
Lavaggio normale, max 40°C



Wash at max 60°C mild
Lavaggio delicato, max 60°C

dry cleaning / lavaggio a secco



Do not dry clean
Lavaggio a secco non consentito



Dry clean, perchloroethylene (PCE)
Lavaggio a secco con percloroetilene (PCE)



Gentle dry cleaning with PCE
Lavaggio a secco delicato con PCE

drying / asciugatura



Tumble dry at low temperature
Asciugatrice a bassa temperatura



Do not tumble dry
Non asciugare in asciugatrice



Dry flat
Asciugare disteso



Do not wring
Non strizzare

ironing / stiratura



Do not iron
Non stirare



Iron at low temperature
Stirare a bassa temperatura



Iron at medium temperature
Stirare a media temperatura

bleaching / candeggiamento



Do not bleach
Non candeggiare



Any bleaching agent allowed
Candeggiamento consentito



Compliant to Ecolabel UE environmental requirements
Conforme ai requisiti ambientali Ecolabel UE



Product certified for low chemical emissions:
Prodotto certificato per basse emissioni chimiche:
UL.COM/GG
UL 2818



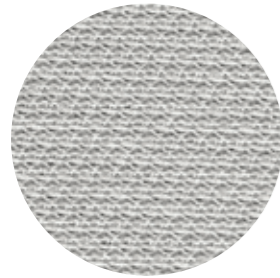
96/98/CE - 2010/68/UE EU marine equipment rules compliant
Conforme ai requisiti europei per equipaggiamenti marittimi

Upholstery Collections

Collezioni imbottiti

Fabrics Tessuti

CATEGORY B / CATEGORIA B



B 01



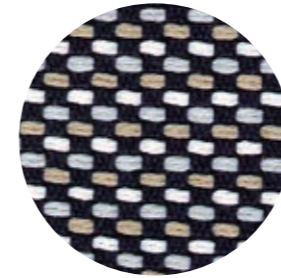
B 02

technical specifications / specifiche tecniche

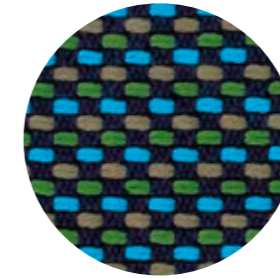


- **COMPOSITION / COMPOSIZIONE**
100% Nylon (Support film PVC)
- **ABRASION / ABRASIONE**
>50.000 cycles, Martindale (EN ISO 12947:00)
- **RUBBING FASTNESS / SOLIDITÀ ALLO SFREGAMENTO**
5, scale 1-5 (EN ISO 105 X12:97)
- **PILLING**
5, scale 1-5 (EN ISO 12945-2:00)
- **LIGHT FASTNESS / SOLIDITÀ ALLA LUCE**
5, scale 1-8 (EN ISO 105-B02:01)

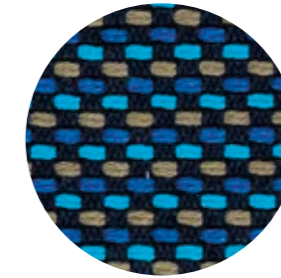
CATEGORY C / CATEGORIA C



C 37



C 38



C 39



C 36

technical specifications / specifiche tecniche

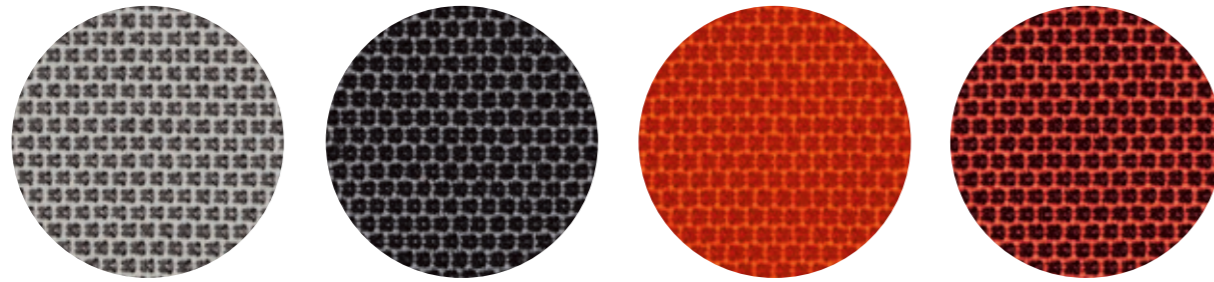


- **COMPOSITION / COMPOSIZIONE**
94% Cotton
6% Polyamide
- **ABRASION / ABRASIONE**
40.000 cycles, Martindale (BS EN ISO 12947-2 1999)
- **RUBBING FASTNESS / SOLIDITÀ ALLO SFREGAMENTO**
Dry 4-5 and Wet 2-3, scale 1-5 (BS EN ISO 105-X12:1995)
- **PILLING**
4, scale 1-5 (BS EN ISO 12945-2:2001 to 5.000 cycles)
- **LIGHT FASTNESS / SOLIDITÀ ALLA LUCE**
4-5 (light colours)
5 (medium-dark colours) (BS EN ISO 105-B02:2001)

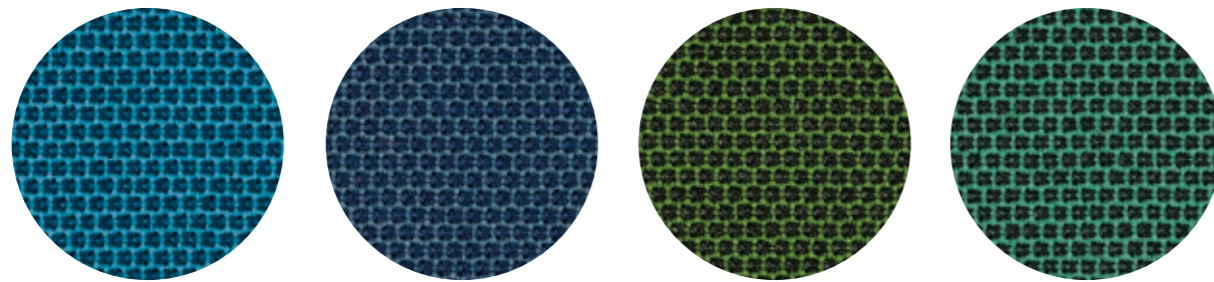
only for collection / solo per collezione



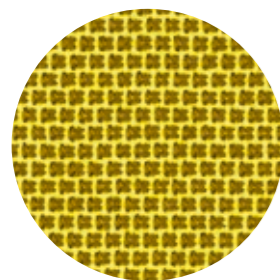
Island



C 101 C 86 C 85 C 89



C 83 C 100 C 84 C 88



C 87

technical specifications / specifiche tecniche

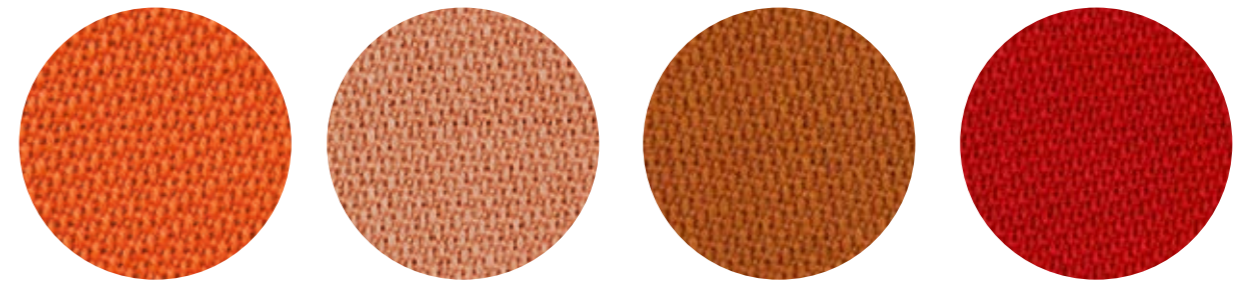


- COMPOSITION / COMPOSIZIONE
54% New Zealand Wool
44% Post-consumer recycled, polyester
2% Polyamide
- ABRASION / ABRASIONE
100.000 cycles, Martindale
(EN ISO 12947-2)

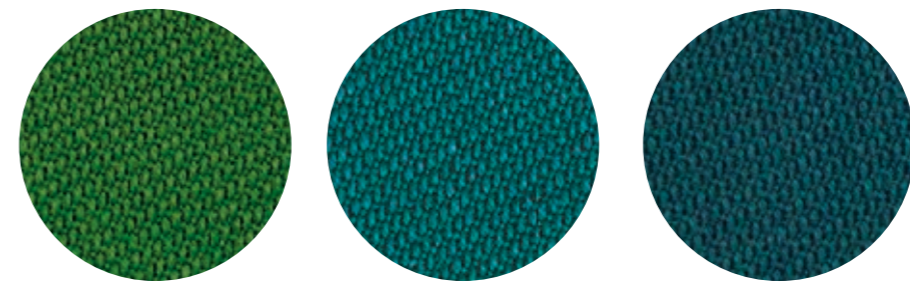
- RUBBING FASTNESS /
SOLIDITÀ ALLO SFREGAMENTO
Dry and Wet 4-5, scale 1-5
(EN ISO 105-X12:1995)
- PILLING
4-5, scale 1-5 (EN ISO 12945-2)
- LIGHT FASTNESS / SOLIDITÀ ALLA LUCE
5-7, scale 1-8 (EN ISO 105-B02)

- FLAME RESISTANCE /
RESISTENZA AL FUOCO
BS EN 1021 1&2
BS EN 1021-1
ÖNORM A3800-1
US CA TB 117-2013 - Compliant
to the criteria certifying the
absence of flame retardant
chemicals (AB 2998)

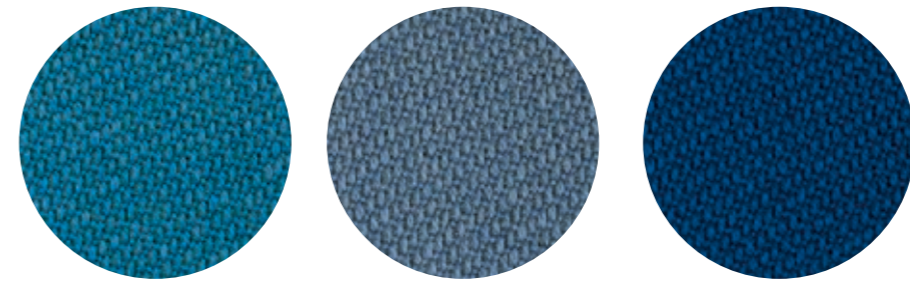
- APPROVED / OMOLOGATO



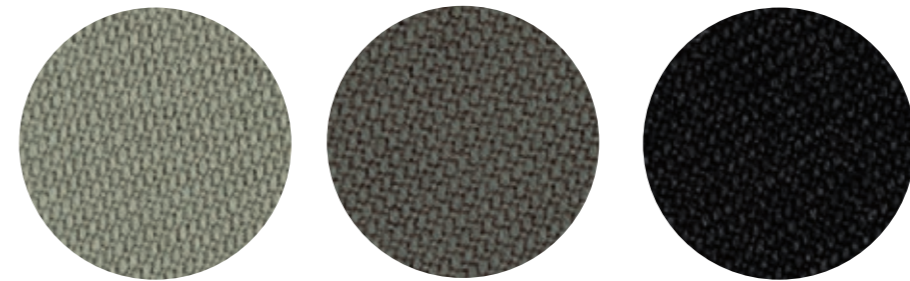
C 110 C 111 C 112 C 113



C 117 C 118 C 119



C 120 C 121 C 122



C 114 C 115 C 116

technical specifications / specifiche tecniche

- COLLECTION / COLLEZIONE
svensson - SEMI
- COMPOSITION / COMPOSIZIONE
85% Wool, 15% Polyamide
- ABRASION / ABRASIONE
100.000 cycles,
Martindale
(EN ISO 12947-2)

- RUBBING FASTNESS /
SOLIDITÀ ALLO SFREGAMENTO
Dry 4 and Wet 3-4,
scale 1-5
(EN ISO 105-X12)

- LIGHT FASTNESS /
SOLIDITÀ ALLA LUCE
5-7, scale 1-8
(EN ISO 105-B02)

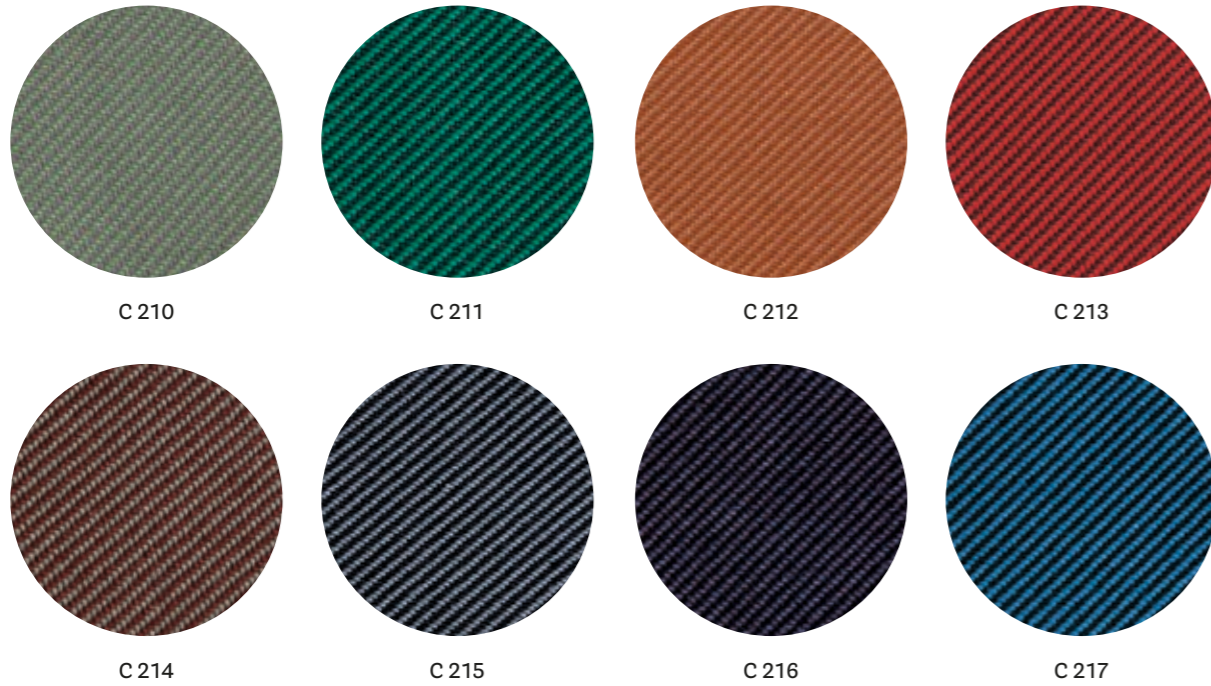
- FLAME RESISTANCE /
RESISTENZA AL FUOCO
BS 5852 Crib 5
EN ISO 1021 Part 1&2
IMO FTP Code 2010:
Part 8

- APPROVED / OMOLOGATO



- UNI 9175 Classe 1 IM
US CA TB 117-2013 - Compliant
to the criteria certifying the
absence of flame retardant
chemicals (AB 2998)

CATEGORY C / CATEGORIA C



technical specifications / specifiche tecniche



- COLLECTION / COLLEZIONE
kvadrat - RELATE
DESIGNER Patricia Urquiola
- COMPOSITION / COMPOSIZIONE
100% TREVIRA CS®
- ABRASION / ABRASIONE
80.000 cycles, Martindale
(EN ISO 12947)
- RUBBING FASTNESS / SOLIDITÀ ALLO SFREGAMENTO
Dry and Wet 4-5, scale 1-5
(EN ISO 105-X12)
- PILLING
4-5, scale 1-5 (EN ISO 12945)
- LIGHT FASTNESS / SOLIDITÀ ALLA LUCE
5-7, scale 1-8 (EN ISO 105-B02)
- SOUND ABSORPTION / ASSORBIMENTO ACUSTICO
folded: $\alpha_w=0.50$ Class D (EN ISO 354)
- FLAME RESISTANCE / RESISTENZA AL FUOCO
AS/NZS 3837, class 2
BS 5852 Crib 5
BS 5852 Part 1 with treatment
DIN 4102 B1
EN 1021-1/2
IMO FTP Code 2010: Part 8
NF D60-013
NF P92 507 M1
NFPA 701
ÖNORM B1/Q1
SN 198 898 5.2
UNI 9177 Classe 1
US CA TB 117-2013

- APPROVED / OMOLOGATO



CATEGORY D / CATEGORIA D

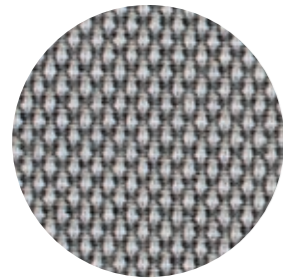


technical specifications / specifiche tecniche



- COMPOSITION / COMPOSIZIONE
22% Acrylic
22% Virgin Wool
22% Polyester
14% Viscose
13% Cotton
7% Linen
- ABRASION / ABRASIONE
30.000 cycles, Martindale
(EN ISO 12947-2)
- RUBBING FASTNESS / SOLIDITÀ ALLO SFREGAMENTO
Dry 4-5 and Wet 3, scale 1-5
(EN ISO 105-X12)
- PILLING
4, scale 1-5 (EN ISO 12945-2 to 5.000 rubs)
- LIGHT FASTNESS / SOLIDITÀ ALLA LUCE
5-6, scale 1-8
(EN ISO 105 - B02)
- FLAME RESISTANCE / RESISTENZA AL FUOCO
BS 5852 Part 1
US CA TB 117-2013 - Compliant to
the criteria certifying the absence of
flame retardant chemicals (AB 2998)

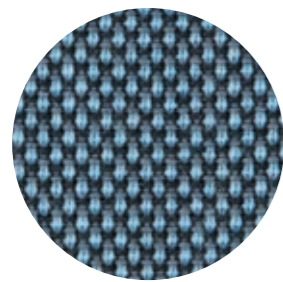
CATEGORY D / CATEGORIA D



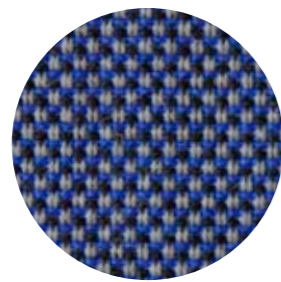
D 40



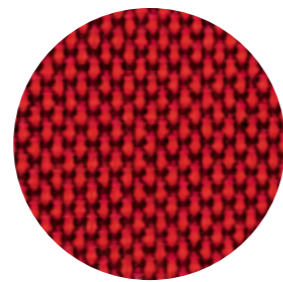
D 41



D 43



D 44



D 42

technical specifications / specifiche tecniche

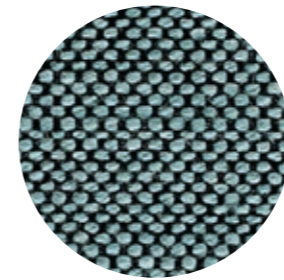


- **COMPOSITION / COMPOSIZIONE**
88% New Zealand Wool
12% Polyamide
- **ABRASION / ABRASIONE**
100.000 cycles, Martindale
(EN ISO 12947-2)
- **RUBBING FASTNESS / SOLIDITÀ ALLO SFREGAMENTO**
Dry and Wet 4-5, scale 1-5
(EN ISO 105-X12)
- **PILLING**
4-5, scale 1-5 (EN ISO 12945-2)
- **LIGHT FASTNESS / SOLIDITÀ ALLA LUCE**
5-7, scale 1-8 (EN ISO 105-B02)
- **FLAME RESISTANCE / RESISTENZA AL FUOCO**
BS EN 1021 1&2
BS 5852 Part 1 0, 1
UNI 9175 Classe 1 IM
US CA TB 117-2013 - Compliant
to the criteria certifying the
absence of flame retardant
chemicals (AB 2998)

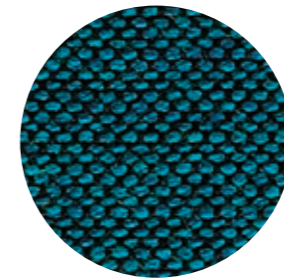
- APPROVED / OMOLOGATO



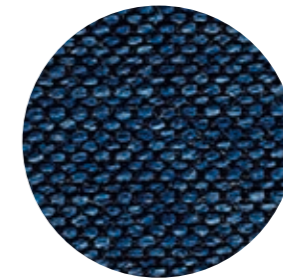
CATEGORY G / CATEGORIA G



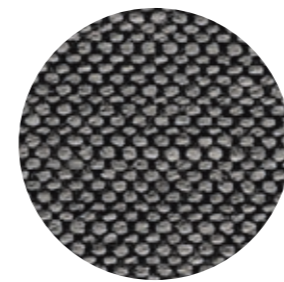
G 154



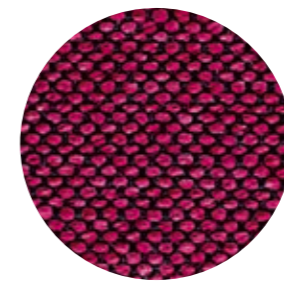
G 155



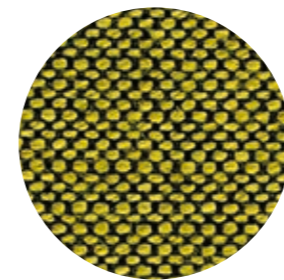
G 156



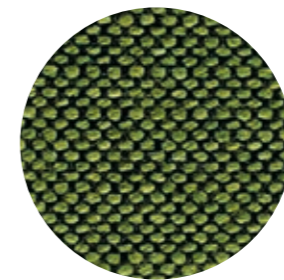
G 151



G 150



G 152



G 153

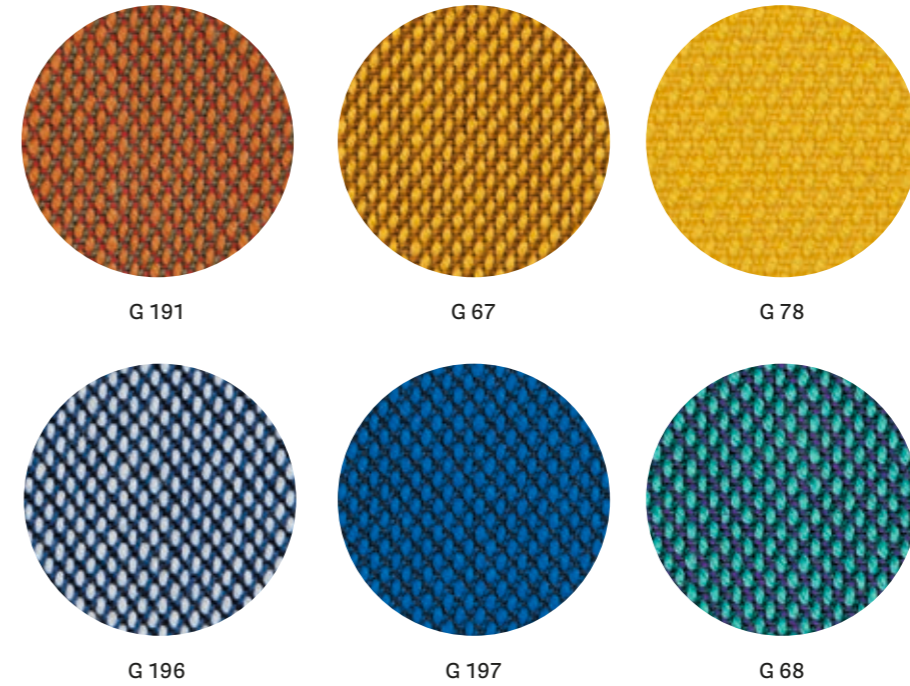
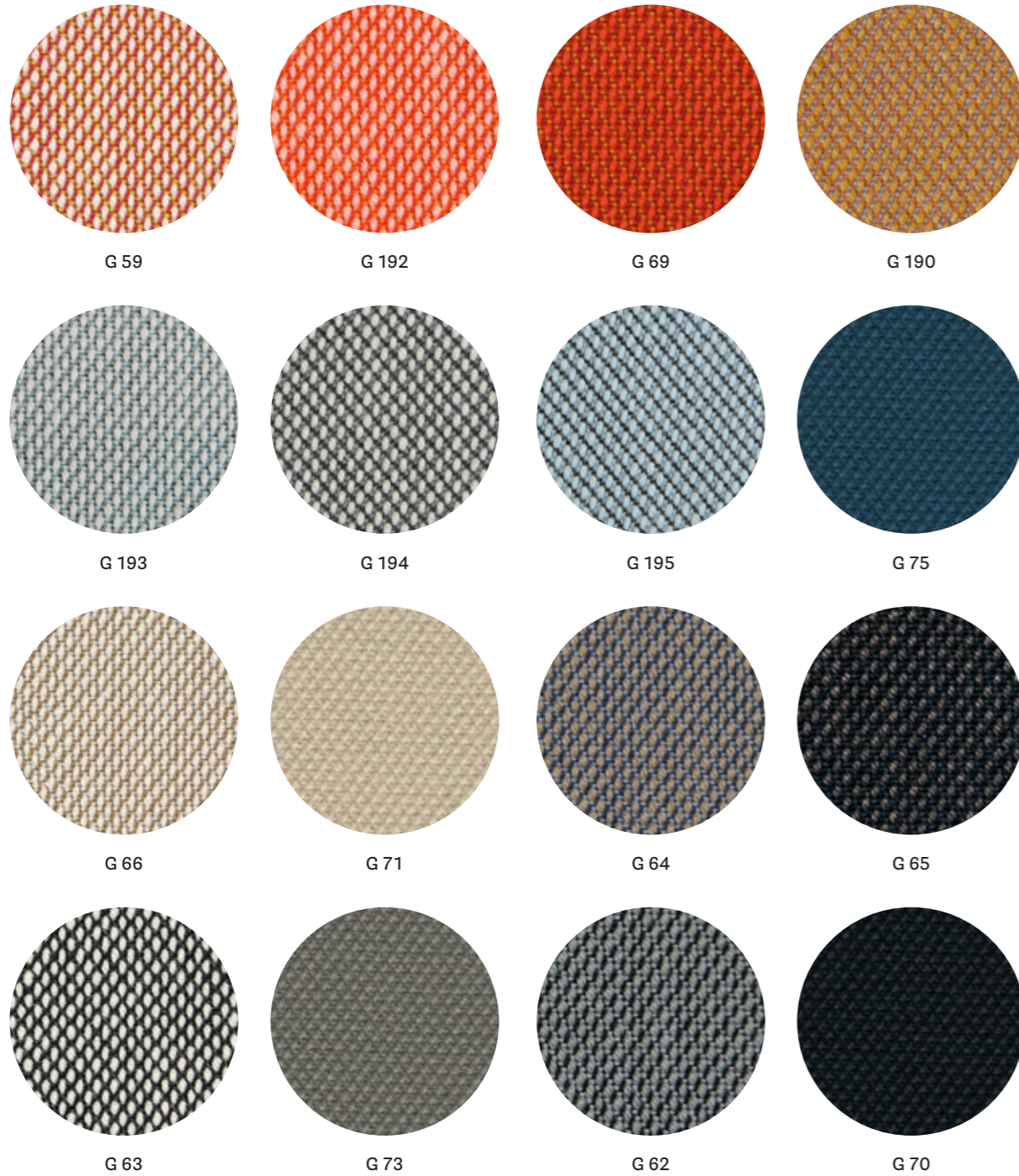
technical specifications / specifiche tecniche



- **COLLECTION / COLLEZIONE**
svensson - BALANCE
- **COMPOSITION / COMPOSIZIONE**
82% Wool
12% Rami
6% Polyamide
- **ABRASION / ABRASIONE**
100.000 cycles, Martindale (EN ISO 12947-2)
- **RUBBING FASTNESS / SOLIDITÀ ALLO SFREGAMENTO**
Dry 4 and Wet 3-4, scale 1-5
(EN ISO 105-X12)
- **LIGHT FASTNESS / SOLIDITÀ ALLA LUCE**
5-7, scale 1-8 (EN ISO 105-B02)
- **FLAME RESISTANCE / RESISTENZA AL FUOCO**
BS 5852 Crib 5
EN ISO 1021 Part 1&2
IMO FTP Code 2010: Part 8
UNI 9175 Classe 1 IM
US CA TB 117-2013 - Compliant
to the criteria certifying the absence of
flame retardant chemicals (AB 2998)

- APPROVED / OMOLOGATO



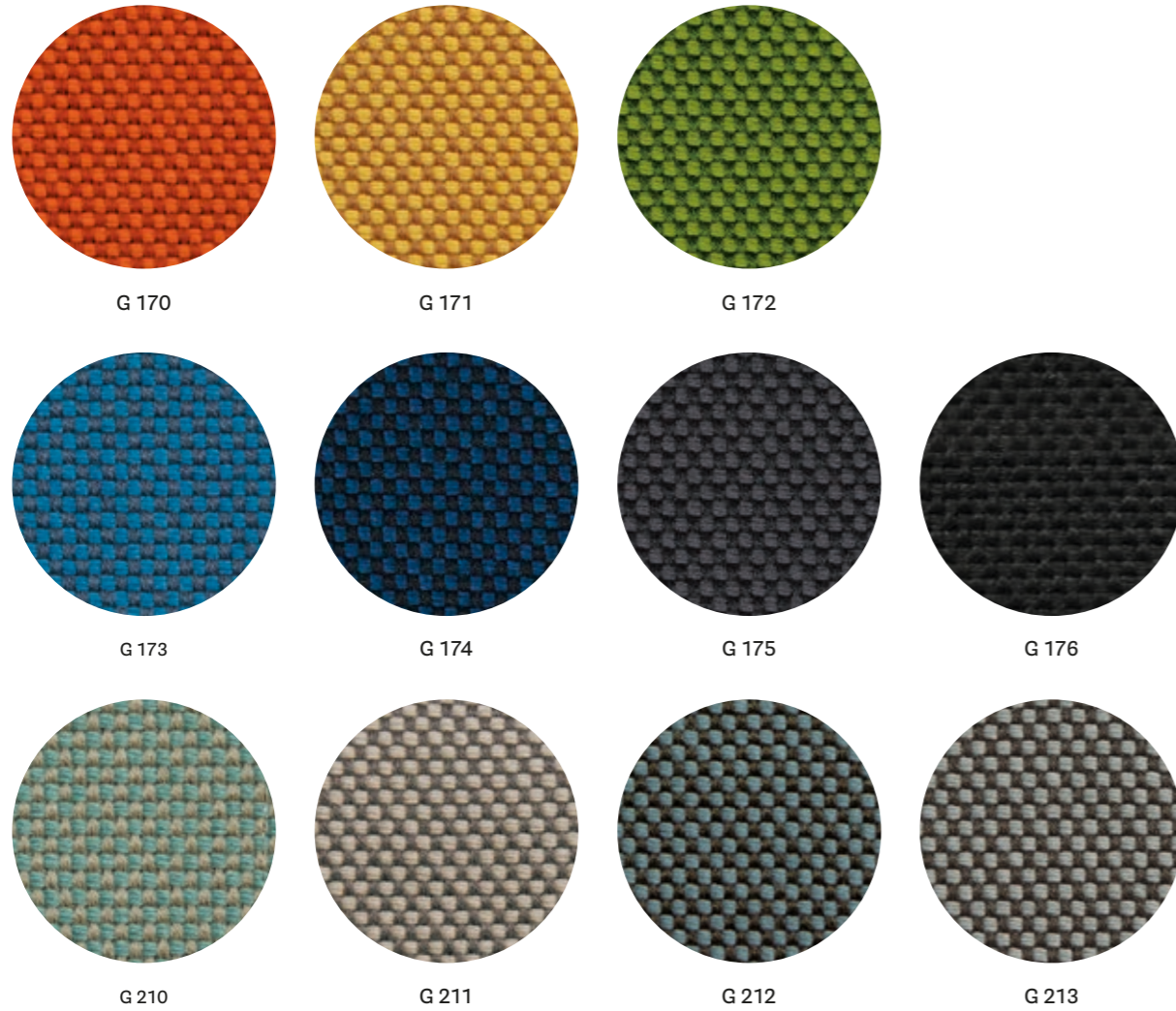


technical specifications / specifiche tecniche



- COLLECTION / COLLEZIONE
kvadrat
G59+G69; G190+G197: STEELCUT TRIO
G70+G78: STEELCUT
DESIGNERS Dijkmeijer & Ridolfo
- COMPOSITION / COMPOSIZIONE
90% New wool
10% Nylon
- ABRASION / ABRASIONE
100.000 cycles; for G70+G78: 80.000 cycles
Martindale (DS/EN ISO 12947-2:2016)
- PILLING
4, scale 1-5; for G70+G78: 3-4, scale 1-5
(EN ISO 12945)
- LIGHT FASTNESS / SOLIDITÀ ALLA LUCE
5-7, scale 1-8 (EN ISO 105-B02)
- SOUND ABSORPTION / ASSORBIMENTO ACUSTICO
folded: $\alpha_w = 0.95$ Class A
for G70+G78: folded: $\alpha_w = 0.80$ Class B
(ISO 11654)
- FLAME RESISTANCE / RESISTENZA AL FUOCO
AS/NZS 1530.3
AS/NZS 3837 Class 2
BS 5852 Part 1
- BS 5852 Crib 5 with treatment
BS 5852 IGNITION SOURCE 3
EN 1021 - 1/2
GB 50222 B1 with treatment
IMO FTP Code 2010: Part 8
NF D60-013
NFPA 260
ÖNORM B1/Q1
SN 198 898 5.3 with treatment
UNI 9175 Classe 1 IM
US CA TB 117-2013 - Compliant
to the criteria certifying the
absence of flame retardant
chemicals (AB 2998)

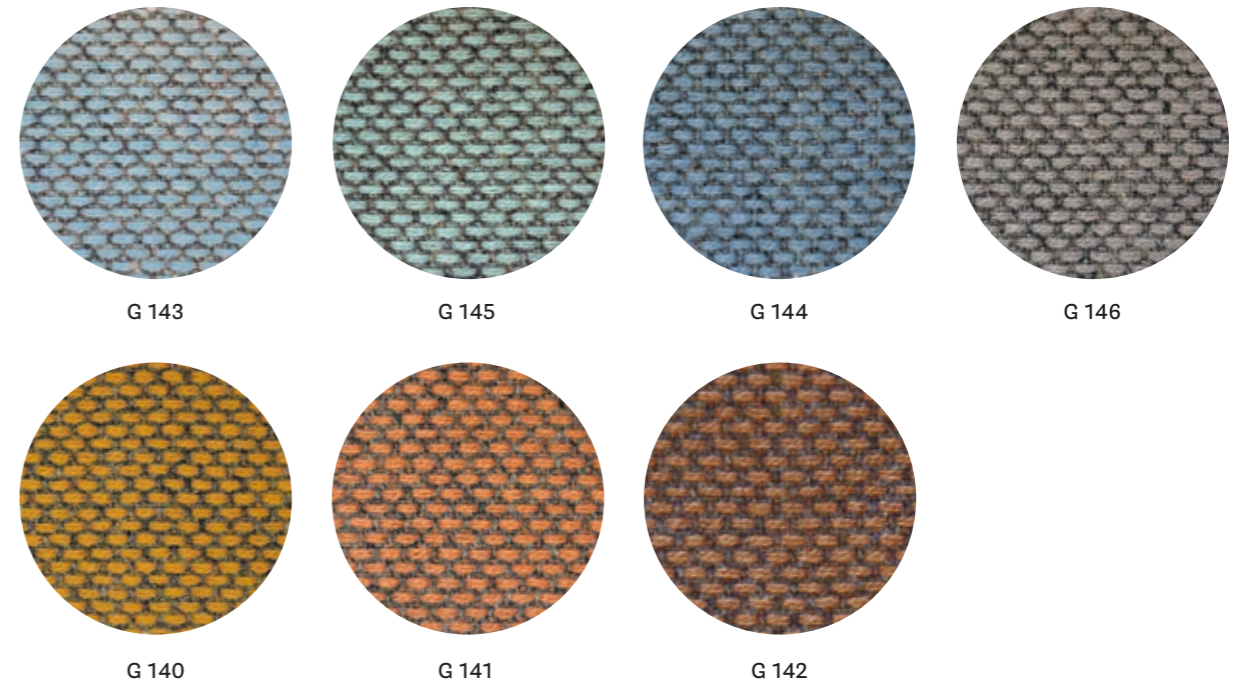




technical specifications / specifiche tecniche



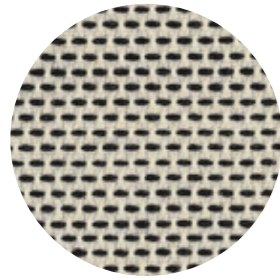
- COMPOSITION / COMPOSIZIONE
96% Virgin Wool
4% Polyamide
- ABRASION / ABRASIONE
90.000 cycles, Martindale (DIN EN ISO 12947-2)
- APPROVED / OMOLOGATO
- PILLING
4-5, scale 1-5 (EN ISO 12945-2)
- LIGHT FASTNESS / SOLIDITÀ ALLA LUCE
5-8, scale 1-8 (EN ISO 105-B02)
- SOUND ABSORPTION / ASSORBIMENTO ACUSTICO
folded: $\alpha_w = 0.95$ Class A (ISO 11654)
- FLAME RESISTANCE / RESISTENZA AL FUOCO
BS 5852:1979 (Part 1)
BS 5852:2006 (Part 2) Crib 5
DIN 4102-1 B2
EN 13501-1
EN 1021 -1 and -2
FAR 25.853 (12 sec. vertical)
IMO: 2014/90/EU (MED)
UNI 9175 Classe 1 IM
US CA TB 117-2013 - Compliant to the criteria certifying the absence of flame retardant chemicals (AB 2998)



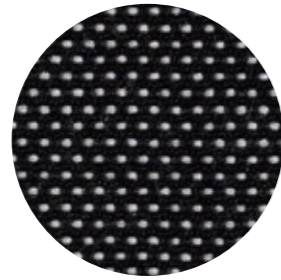
technical specifications / specifiche tecniche



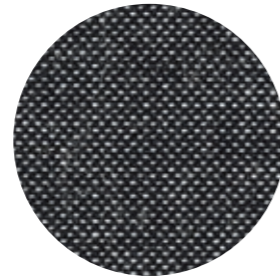
- COLLECTION / COLLEZIONE
kvadrat - RE-WOOL
DESIGNER Margrethe Odgaard
- COMPOSITION / COMPOSIZIONE
45% Recycled wool
45% New wool
10% Nylon
- ABRASION / ABRASIONE
50.000 cycles, Martindale (DS/EN ISO 12947-2:2016)
- RUBBING FASTNESS / SOLIDITÀ ALLO SFREGAMENTO
Dry and Wet 4-5, scale 1-5 (ISO 105-X12)
- PILLING
4, scale 1-5 (EN ISO 12945)
- LIGHT FASTNESS / SOLIDITÀ ALLA LUCE
5-7, scale 1-8 (ISO 105-B02:2014)
- SOUND ABSORPTION / ASSORBIMENTO ACUSTICO
folded: $\alpha_w = 0.75$ Class C (ISO 11654)
- APPROVED / OMOLOGATO
- FLAME RESISTANCE / RESISTENZA AL FUOCO
AS/NZS 1530.3
AS/NZS 3837 Class 2
BS 5852 Part 1
BS 5852 Crib 5 with treatment
BS 5852 IGNITION SOURCE 3
EN 1021 - 1/2
IMO FTP Code 2010: Part 8
NF D60-013
ÖNORM B1/Q1
UNI 9175 Classe 1IM
US CA TB 117-2013 - Compliant to the criteria certifying the absence of flame retardant chemicals (AB 2998)



G 101



G 100



G 102

technical specifications / specifiche tecniche

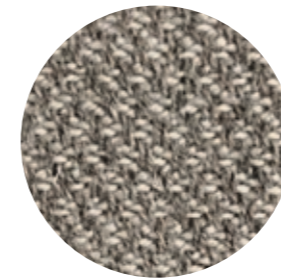


- COLLECTION / COLLEZIONE
kvadrat - BASEL
DESIGNERS Herzog & de Meuron
- COMPOSITION / COMPOSIZIONE
90% New wool
10% Nylon
- ABRASION / ABRASIONE
50.000 cycles,
Martindale (EN ISO 12947-2:1998)

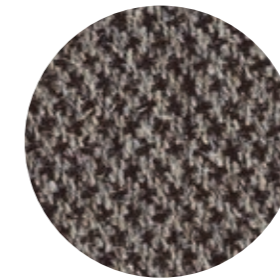
- PILLING
4, scale 1-5 (EN ISO 12945)
- LIGHT FASTNESS / SOLIDITÀ ALLA LUCE
6-7, scale 1-8 (ISO 105-B02)
- FLAME RESISTANCE / RESISTENZA AL FUOCO
AS/NZS 3837 Class 2
BS 5852 Part 1
BS 5852 Crib 5 with treatment
EN 1021 - 1/2

GB 50222 B1 with treatment
IMO FTP Code 2010: Part 8
NFPA 260
NF D60-013
ÖNORM B1/Q1
SN 198 898 5.3 with treatment
UNI 9175 Classe 1 IM
US CA TB 117-2013 - Compliant
to the criteria certifying the
absence of flame retardant
chemicals (AB 2998)

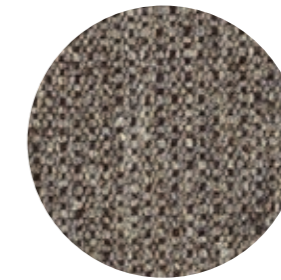
• APPROVED / OMOLOGATO



G 120



G 121



G 122

technical specifications / specifiche tecniche



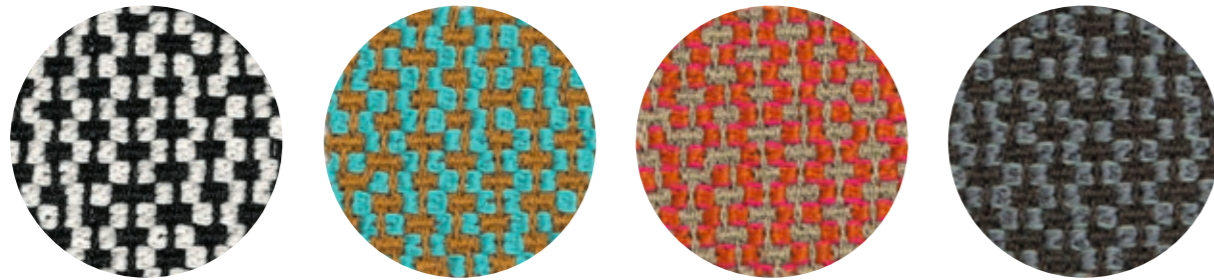
- COLLECTION / COLLEZIONE
kvadrat - MOLLY
DESIGNER Åsa Pärson
- COMPOSITION / COMPOSIZIONE
100% New wool
- ABRASION / ABRASIONE
75-100.000 cycles,
Martindale (EN ISO 12947-2:1998)

- PILLING
3-4, scale 1-5 (EN ISO 12945)
- LIGHT FASTNESS / SOLIDITÀ ALLA LUCE
6-7, scale 1-8 (ISO 105-B02)
- FLAME RESISTANCE / RESISTENZA AL FUOCO
BS 5852 Part 1
BS 5852 Crib 5 with treatment
EN 1021 - 1/2

IMO FTP Code 2010: Part 8
NFPA 260
NF D60-013
ÖNORM B1/Q1
UNI 9175 Classe 1IM
US CA TB 117-2013 - Compliant
to the criteria certifying the
absence of flame retardant
chemicals (AB 2998)

• APPROVED / OMOLOGATO





G 130

G 131

G 132

G 133

technical specifications / specifiche tecniche

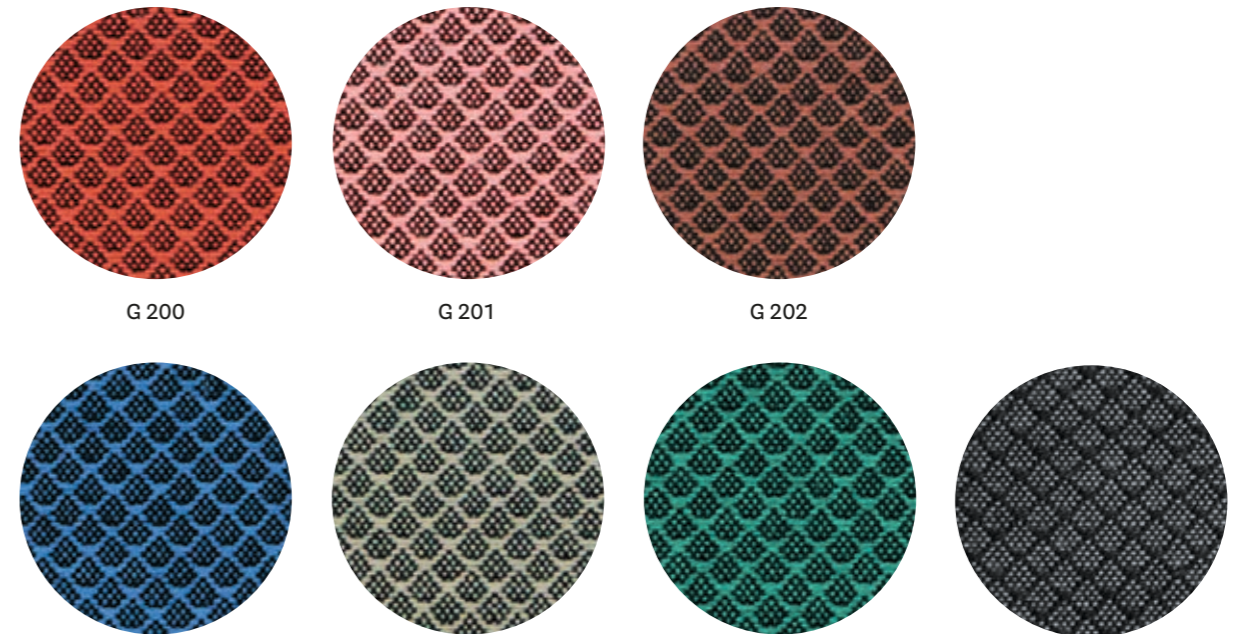


- COMPOSITION / COMPOSIZIONE
95% Virgin Wool
5% Polyamide
- ABRASION / ABRASIONE
52.000 cycles, Martindale
(DIN EN ISO 12947-2)
- PILLING
4-5, scale 1-5 (EN ISO 12945-2)

- LIGHT FASTNESS / SOLIDITÀ ALLA LUCE
5-8, scale 1-8 (EN ISO 105-B02)
- SOUND ABSORPTION / ASSORBIMENTO ACUSTICO
folded: $\alpha_w = 0.85$ Class B (ISO 11654)
- FLAME RESISTANCE / RESISTENZA AL FUOCO
BS 5852:1979 (Part 1)
BS 5852:2006 (Part 2) Crib 5
DIN 4102-1 B2

EN 1021 -1 and -2
EN 13501-1
FAR 25.853 (12 sec. vertical)
IMO: 2014/90/EU (MED)
UNI 9175 Classe 1 IM
US CA TB 117-2013 - Compliant to
the criteria certifying the absence of
flame retardant chemicals (AB 2998)

- APPROVED / OMOLOGATO



G 200

G 201

G 202

G 203

G 204

G 205

G 206

technical specifications / specifiche tecniche



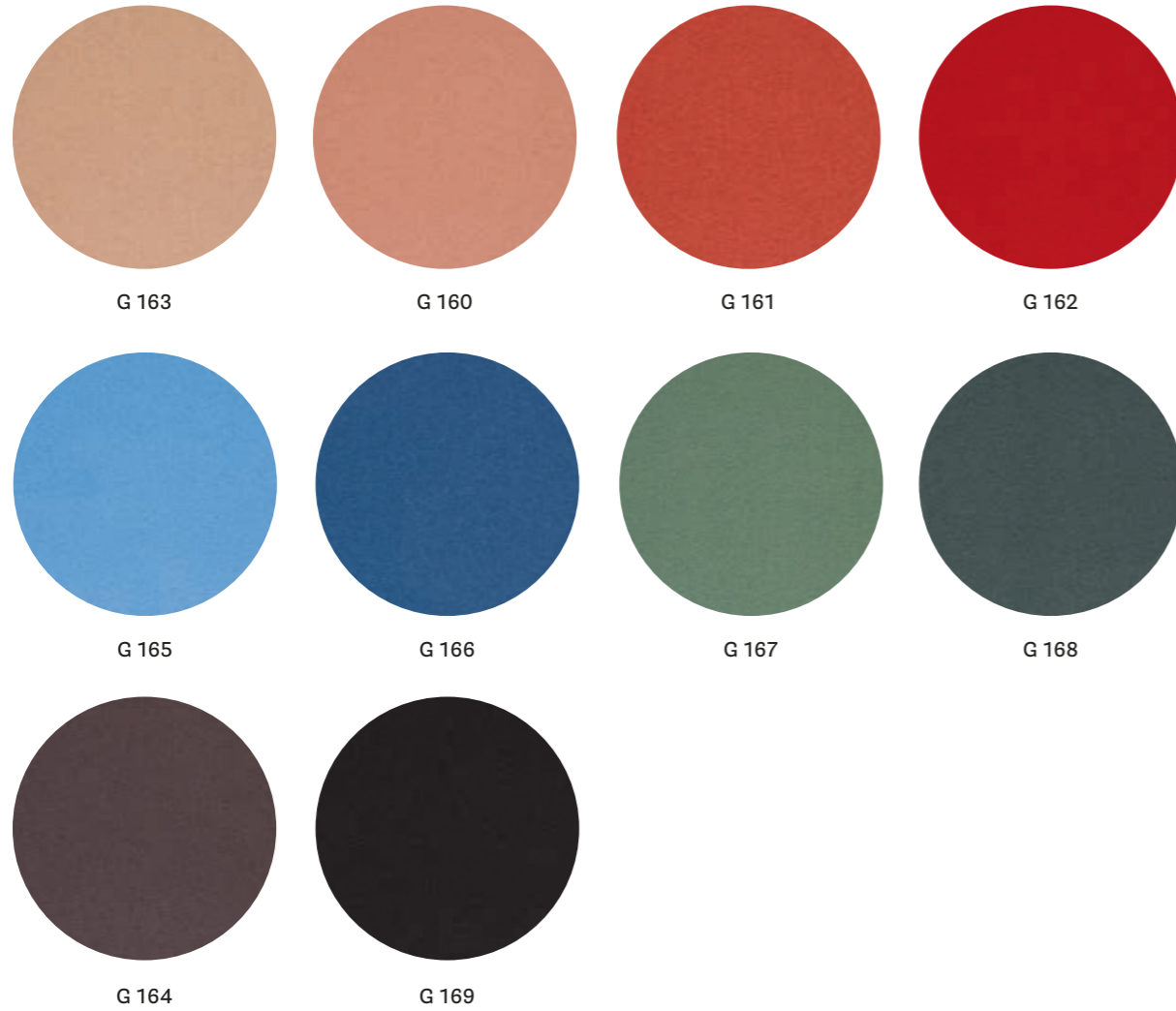
- COLLECTION / COLLEZIONE
kvadrat - JAALI
DESIGNER Doshi Levien
- COMPOSITION / COMPOSIZIONE
92% New wool
8% Nylon
- ABRASION / ABRASIONE
80.000 cycles, Martindale
(EN ISO 12947)

- RUBBING FASTNESS / SOLIDITÀ ALLO SFREGAMENTO
Dry 4-5 and Wet 3-5, scale 1-5
(EN ISO 105-X12)
- PILLING
4, scale 1-5 (EN ISO 12945)
- LIGHT FASTNESS / SOLIDITÀ ALLA LUCE
6-7, scale 1-8 (EN ISO 105-B02)

- FLAME RESISTANCE / RESISTENZA AL FUOCO
AS/NZS 1530.3
BS 5852 Part 1
BS 5852 Crib 5 with treatment
BS 5852 ignition source 3
EN 1021-1/2
IMO FTP Code 2010: Part 8
NF D60-013
SN 198 898 5.3 with treatment
UNI 9175 Classe 1IM
US CA TB 117-2013 - Compliant
to the criteria certifying the
absence of flame retardant
chemicals (AB 2998)

- APPROVED / OMOLOGATO





technical specifications / specifiche tecniche



- COLLECTION / COLLEZIONE
kvadrat - HERO
DESIGNER Patricia Urquiola
- COMPOSITION / COMPOSIZIONE
96% New wool
4% Nylon
- ABRASION / ABRASIONE
45.000 cycles, Martindale
(EN ISO 12947)
- PILLING
3-4, scale 1-5 (EN ISO 12945)

- LIGHT FASTNESS / SOLIDITÀ ALLA LUCE
5-7, scale 1-8 (ISO 105-B02)
- SOUND ABSORPTION / ASSORBIMENTO ACUSTICO
folded: $\alpha_w = 0.75$ Class C (ISO 11654)
- FLAME RESISTANCE / RESISTENZA AL FUOCO
AS/NZS 3837 Class 2
BS 5852 Crib 5 with treatment
BS 5852 Part 1
EN 1021 - 1/2
IMO FTP Code 2010: Part 8
IMO FTP Code 2010: Part 7 with treatment

NF D60-013
SN 198 898 5.3 with treatment
UNI 9175 Classe 1 IM
US CA TB 117-2013 - Compliant to
the criteria certifying the absence of
flame retardant chemicals (AB 2998)

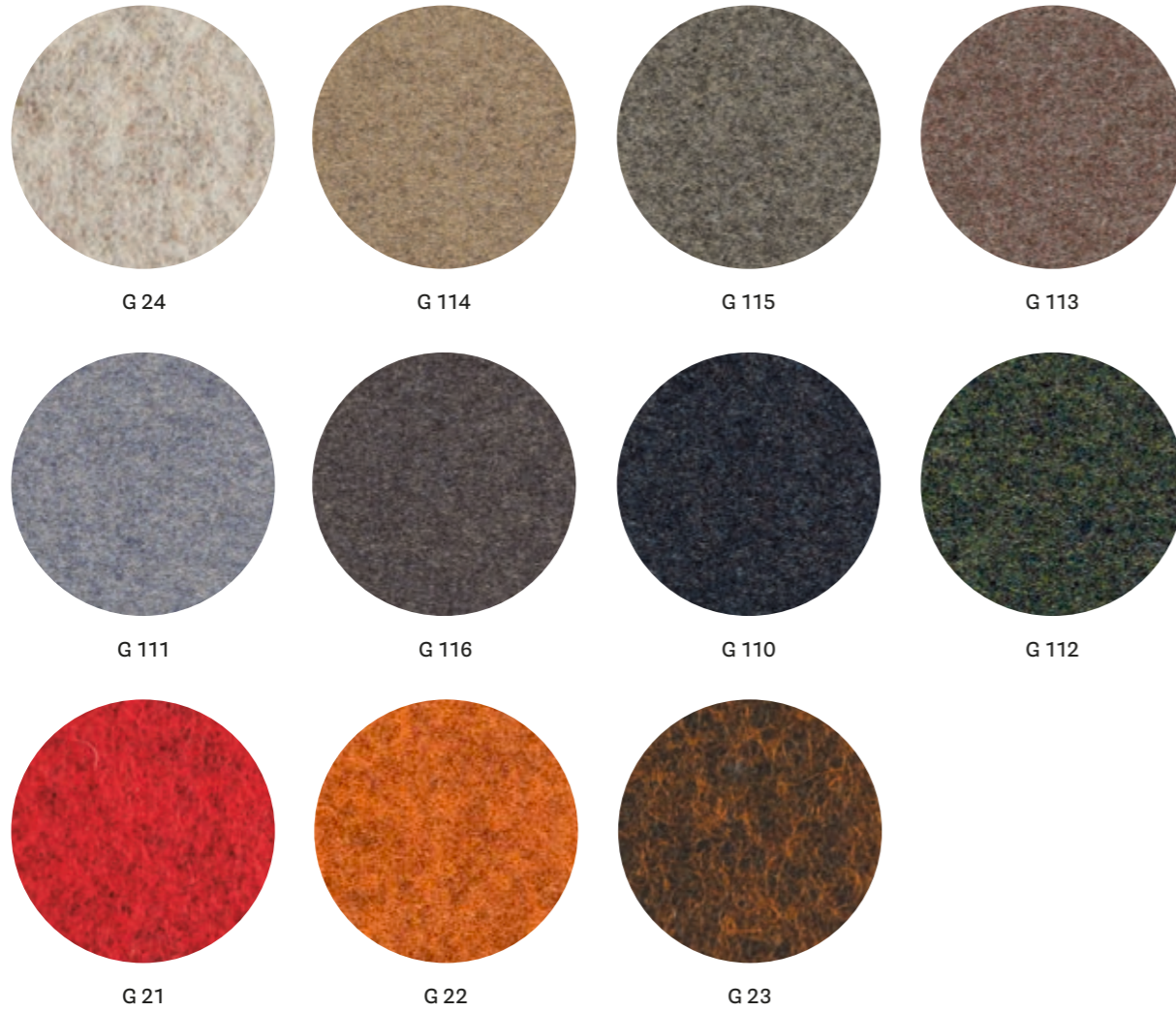
- APPROVED / OMOLOGATO
-



technical specifications / specifiche tecniche



- COMPOSITION / COMPOSIZIONE
88% Polyester
12% Polyurethane incl.
antistatic fibers and fire
retardant fibers in the backside
- ABRASION / ABRASIONE
150.000 cycles, Martindale
(EN ISO 12947)
- PILLING
5, scale 1-5 (EN ISO 12945)
- LIGHT FASTNESS / SOLIDITÀ ALLA LUCE
5-6, scale 1-8 (ISO 105-B02)
- RUBBING FASTNESS / SOLIDITÀ ALLO SFREGAMENTO
Dry and Wet 4/4, scale 1-5
(EN ISO 105-X12)
- FLAME RESISTANCE / RESISTENZA AL FUOCO
BS EN 1021 1&2 Cigarette and Match
BS EN 1021-1 Cigarette
ÖNORM A3800-B2-B3825-Q1 UK
NF P 92-503 M3
US CA TB 117-2013



technical specifications / specifiche tecniche

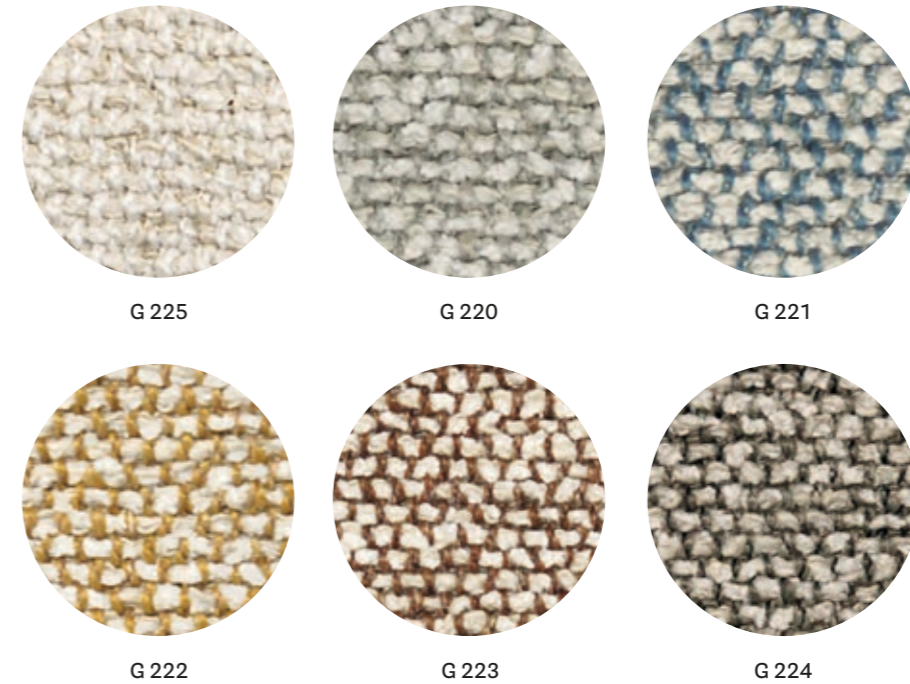


- COLLECTION / COLLEZIONE
kvadrat
G110+G116: DIVINA MD
G21+G24: DIVINA MELANGE
DESIGNER Finn Skødt
- COMPOSITION / COMPOSIZIONE
100% New Wool
- ABRASION / ABRASIONE
45.000 cycles, Martindale
(EN ISO 12947)
- PILLING
3, scale 1-5 (EN ISO 12945)

- LIGHT FASTNESS / SOLIDITÀ ALLA LUCE
5-7, scale 1-8 (ISO 105-B02)
- SOUND ABSORPTION / ASSORBIMENTO ACUSTICO
folded: $\alpha_w = 0.70$ Class C (ISO 11654)
- FLAME RESISTANCE / RESISTENZA AL FUOCO
AS/NZS 1530.3
BS 5852 Crib 5
BS 5852 Part 1
BS 5867 part 2 type B
EN 1021-1/2
EN 13501, C-s1, d0, glued
GB 50222 B1 with treatment
IMO FTP Code 2010: Part 8

NF D60-013
NFPA 260
ÖNORM B1/ Q1
SN 198 898 5.3 with treatment
UNI 9175 Classe 1 IM
US CA TB 117-2013 - Compliant to
the criteria certifying the absence of
flame retardant chemicals (AB 2998)

- APPROVED / OMOLOGATO



technical specifications / specifiche tecniche

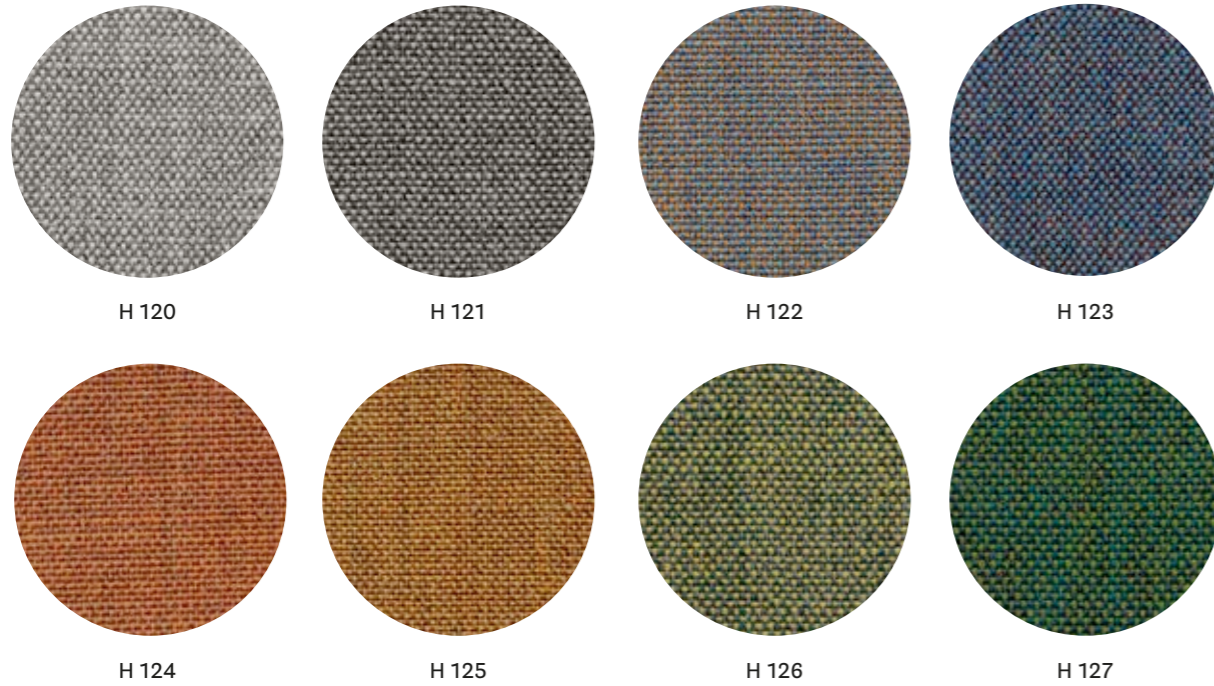


- COLLECTION / COLLEZIONE
kvadrat-SAHCO
MOSS
DESIGNER Vincent Van Duysen
- COMPOSITION / COMPOSIZIONE
52% Cotton
22% Viscose
14% Polyacrylic
6% Linen
3% Nylon
3% Polyester

- ABRASION / ABRASIONE
50.000 cycles, Martindale
(EN ISO 12947)
- PILLING
4-5, scale 1-5 (EN ISO 12945)
- LIGHT FASTNESS / SOLIDITÀ ALLA LUCE
5-7, scale 1-8 (ISO 105-B02)

- FLAME RESISTANCE / RESISTENZA AL FUOCO
BS 5852 crib 5 with treatment
BS 5852 part 1
EN 1021-1/2
US CA TB 117-2013 - Compliant to
the criteria certifying the absence of
flame retardant chemicals (AB 2998)

CATEGORY H / CATEGORIA H



technical specifications / specifiche tecniche



- COLLECTION / COLLEZIONE
kvadrat
REMIX 3
DESIGNER Giulio Ridolfo
- COMPOSITION / COMPOSIZIONE
90% New Wool
10% Nylon
- ABRASION / ABRASIONE
100.000 cycles, Martindale
(EN ISO 12947)
- RUBBING FASTNESS /
SOLIDITÀ ALLO SFREGAMENTO
Dry 4-5 and Wet 3-5, scale 1-5
(EN ISO 105-X12)

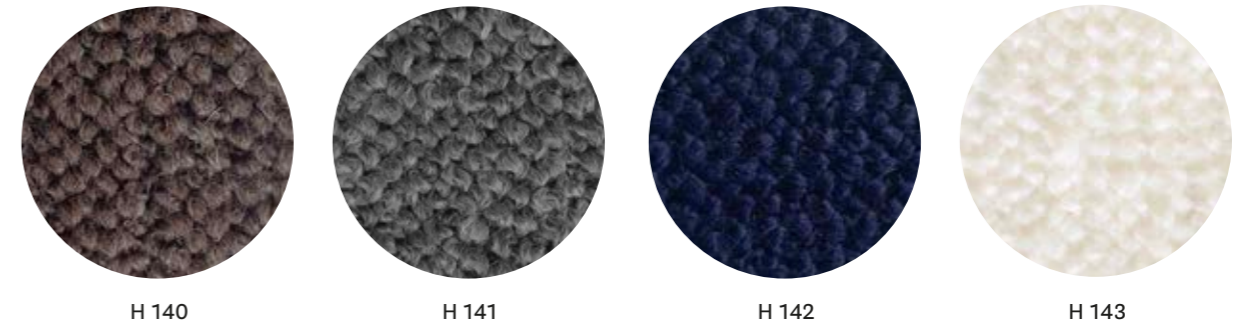
- PILLING
4, scale 1-5 (EN ISO 12945)
- LIGHT FASTNESS / SOLIDITÀ ALLA LUCE
5-7, scale 1-8 (EN ISO 105-B02)
- SOUND ABSORPTION / ASSORBIMENTO ACUSTICO
folded: $\alpha_w = 0.80$ Class B (EN ISO 354)
- FLAME RESISTANCE / RESISTENZA AL FUOCO
AS/NZS 1530.3
AS/NZS 3837 Class 2
ASTM E84 class A
BS 5852 Crib 5 with treatment
BS 5852 IGNITION SOURCE 3
BS 5852 Part 1
EN 1021 - 1/2

GB 50222 B1 with treatment
IMO FTP Code 2010: Part 7
with treatment
IMO FTP Code 2010: Part 8
NF D60-013
NFPA 260
ÖNORM B1/Q1
SN 198 898 5.3 with treatment
UNI 9175 Classe 1 IM
US CA TB 117-2013 - Compliant to
the criteria certifying the absence of
flame retardant chemicals (AB 2998)

- APPROVED / OMOLOGATO



CATEGORY H / CATEGORIA H



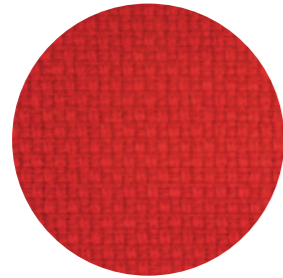
technical specifications / specifiche tecniche



- COMPOSITION / COMPOSIZIONE
35% Wool
35% Acrylic
23% Polyester
7% Cotton
- ABRASION / ABRASIONE
40.000 cycles, Martindale
(EN ISO 12947-2)

- RUBBING FASTNESS / SOLIDITÀ ALLO SFREGAMENTO
Dry 4-5 and Wet 3, scale 1-5
(EN ISO 105-X12)
- PILLING
3-4, scale 1-5
(EN ISO 12945-2 to 5.000 rubs)
- LIGHT FASTNESS / SOLIDITÀ ALLA LUCE
5-6, scale 1-8 (EN ISO 105 - B02)

- FLAME RESISTANCE / RESISTENZA AL FUOCO
EN ISO 1021 Part 1
BS 5852 Crib 5 with treatment
US CA TB 117-2013 - Compliant to
the criteria certifying the absence of
flame retardant chemicals (AB 2998)



H 61

technical specifications / specifiche tecniche

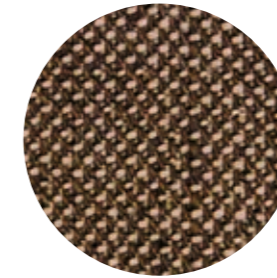


- COMPOSITION / COMPOSIZIONE
92% New Zealand Wool
8% Polyamide
- RUBBING FASTNESS / SOLIDITÀ ALLO SFREGAMENTO
Dry and Wet 4-5, scale 1-5
(EN ISO 105-X12)
- FLAME RESISTANCE / RESISTENZA AL FUOCO
BS EN 1021 1&2
BS EN 1021-1
BS 5852 Part 1 0, 1
UNI 9175 Classe 1 IM
US CA TB 117-2013
- ABRASION / ABRASIONE
200.000 cycles, Martindale
(EN ISO 12947-2)
- PILLING
4, scale 1-5 (EN ISO 12945-2)
- LIGHT FASTNESS / SOLIDITÀ ALLA LUCE
5-7, scale 1-8 (EN ISO 105-B02)

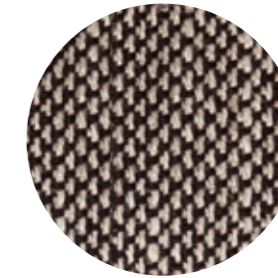
- APPROVED / OMOLOGATO



N 06



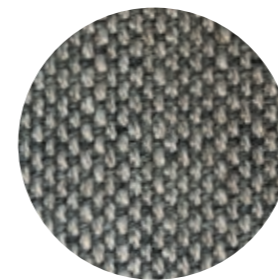
N 07



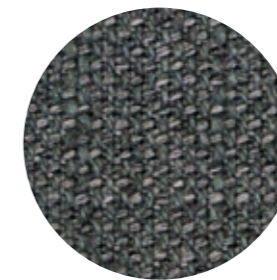
N 05



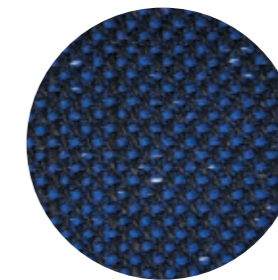
N 08



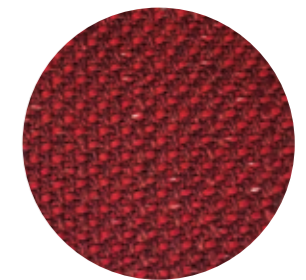
N 01



N 02



N 03



N 04

technical specifications / specifiche tecniche



- COLLECTION / COLLEZIONE
kvadrat - SUNNIVA
DESIGNERS Raf Simons & Fanny Aronsen
- COMPOSITION / COMPOSIZIONE
58% New wool
25% Viscose
8% Linen
5% Nylon
4% Polyester
- RUBBING FASTNESS / SOLIDITÀ ALLO SFREGAMENTO
N01, N02; N05÷N08:
Dry 4-5 and Wet 3-5, scale 1-5
(ISO 105-X12)
- PILLING
3, scale 1-5 (EN ISO 12945)
- FLAME RESISTANCE / RESISTENZA AL FUOCO
AS/NZS 3837, class 2
BS 5852 Part 1
BS 5852 Crib 5 with treatment
EN 1021 – 1/2
NFPA 260
US CA TB 117-2013 - Compliant to
the criteria certifying the absence of
flame retardant chemicals (AB 2998)
for N01, N02; N05÷N08:
IMO FTP Code 2010:
Part 8 with treatment
for N01, N04:
DIN 4102 B2
- ABRASION / ABRASIONE
50.000 cycles, Martindale
(EN ISO 12947)
- LIGHT FASTNESS / SOLIDITÀ ALLA LUCE
N01, N04: 4-7, scale 1-8
N01, N02; N05÷N08: 5-7, scale 1-8
(ISO 105-B02)

- APPROVED / OMOLOGATO





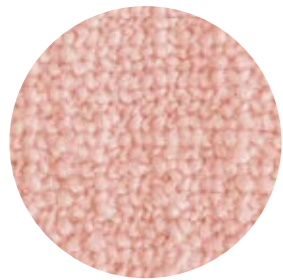
N 30



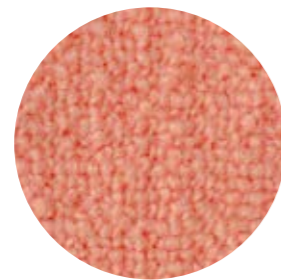
N 31



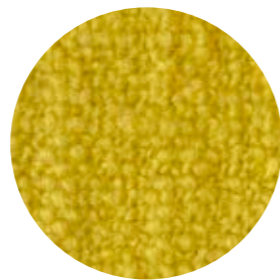
N 32



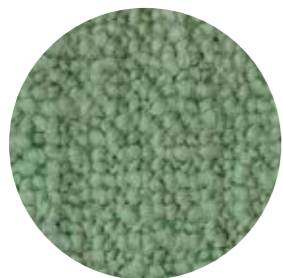
N 33



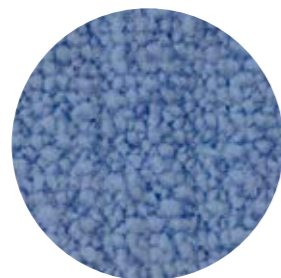
N 34



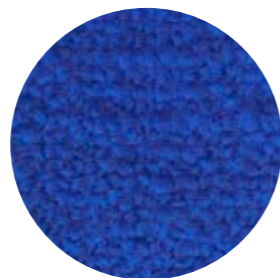
N 35



N 36



N 37



N 38

technical specifications / specifiche tecniche



• COLLECTION / COLLEZIONE

DEDAR

A PERFECT FLOWER

• COMPOSITION / COMPOSIZIONE

65% Wool
32% Cotton
3% Polyamide

• ABRASION / ABRASIONE

80.000 cycles, Martindale
(EN ISO 12947-2)

• RUBBING FASTNESS /
SOLIDITÀ ALLO SFREGAMENTO

Dry 4-5 and Wet 3-4, scale 1-5
(ISO 105-X12)

• PILLING

4-5, scale 1-5 (EN ISO 12945)

• LIGHT FASTNESS / SOLIDITÀ ALLA LUCE

4-5, scale 1-8 (ISO 105-B02)

• FLAME RESISTANCE / RESISTENZA AL FUOCO

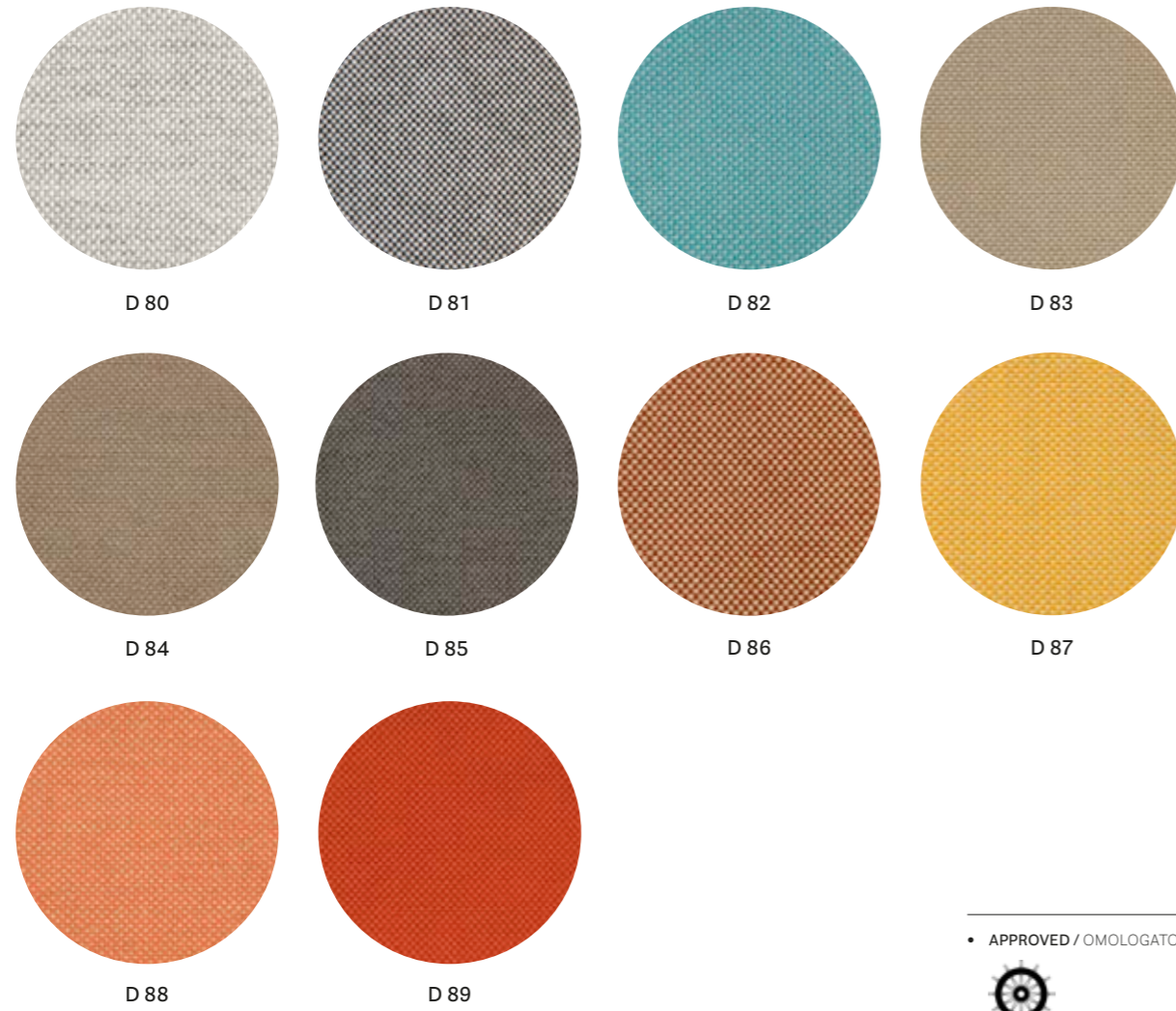
BS 5852 Part 1
BS 5852 Crib 5
US CA TB 117-2013 - Compliant to
the criteria certifying the absence of
flame retardant chemicals (AB 2998)

Fabrics Tessuti

Outdoor



only for outdoor collections cushions / solo per cuscini delle collezioni outdoor



• APPROVED / OMOLOGATO



technical specifications / specifiche tecniche



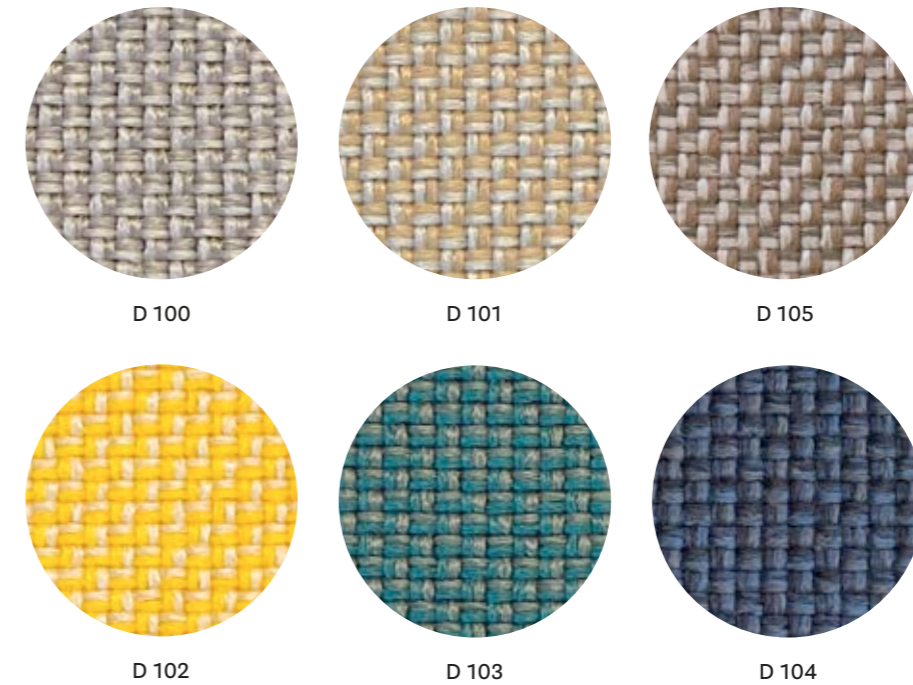
• COLLECTION / COLLEZIONE
PEDRALI
FLORIDA

• COMPOSITION / COMPOSIZIONE
100% Acrylic
• ABRASION / ABRASIONE
> 20.000 cycles, Martindale
(EN ISO 5470-2)

• LIGHT FASTNESS / SOLIDITÀ ALLA LUCE
8, scale 1-8 (EN ISO 105 - B04)
• WATER FASTNESS / SOLIDITÀ ALL'ACQUA
8, scale 1-8 (EN ISO 105 - B04)



only for outdoor collections cushions / solo per cuscini delle collezioni outdoor



technical specifications / specifiche tecniche



• COLLECTION / COLLEZIONE
PEDRALI
ZEFIRO
• COMPOSITION / COMPOSIZIONE
100% Polypropylene

• ABRASION / ABRASIONE
50.000 cycles, Martindale
(EN ISO 12947/2:2000)
• RUBBING FASTNESS / SOLIDITÀ ALLO SFREGAMENTO
Dry 4-5 and Wet 4/5-5, scale 1-5
(EN ISO 105-X12:2003)

• PILLING
4/5, scale 1-5 (EN ISO 12945/2:2002)
• LIGHT FASTNESS / SOLIDITÀ ALLA LUCE
7, scale 1-8 (EN ISO 105-B02:2004)
• WATER FASTNESS / SOLIDITÀ ALL'ACQUA
> 7, scale 1-8 (EN ISO 105-B04:1994)



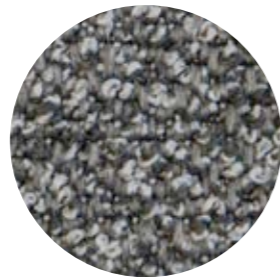
only for outdoor collections cushions / solo per cuscini delle collezioni outdoor



D 110



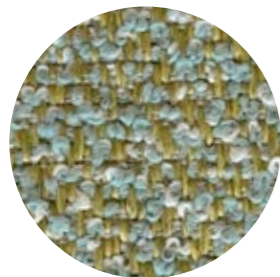
D 111



D 112



D 113



D 114

technical specifications / specifiche tecniche



• COLLECTION / COLLEZIONE

PEDRALI

SAND

• COMPOSITION / COMPOSIZIONE

88% Polypropylene
12% Polyester

• ABRASION / ABRASIONE

30.000 cycles, Martindale
(EN ISO 12947-2)

• RUBBING FASTNESS / SOLIDITÀ ALLO SFREGAMENTO

Dry 4-5 and Wet 4, scale 1-5
(EN ISO 105-X12)

• PILLING

4, scale 1-5
(EN ISO 12945-2 to 5.000 rubs)

• LIGHT FASTNESS / SOLIDITÀ ALLA LUCE

7-8, scale 1-8
(EN ISO 105 - B02)

• WATER FASTNESS / SOLIDITÀ ALL'ACQUA

7, scale 1-8
(EN ISO 105-B04)

• FLAME RESISTANCE / RESISTENZA AL FUOCO

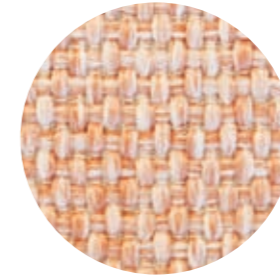
BS 5852 Part 1
US CA TB 117-2013 - Compliant to
the criteria certifying the absence of
flame retardant chemicals (AB 2998)



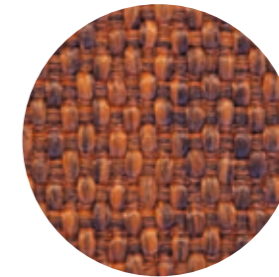
only for outdoor collections cushions / solo per cuscini delle collezioni outdoor



D 22



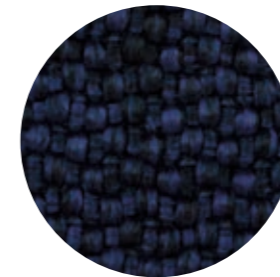
D 23



D 24



D 25



D 26

technical specifications / specifiche tecniche



• COLLECTION / COLLEZIONE

PEDRALI

BREZZA

• COMPOSITION / COMPOSIZIONE

100% Polypropylene

• ABRASION / ABRASIONE

> 30.000 cycles, Martindale
(EN ISO 12947-2)

• RUBBING FASTNESS /

SOLIDITÀ ALLO SFREGAMENTO
Dry and Wet 4-5, scale 1-5
(EN ISO 105-X12)

• PILLING

5, scale 1-5
(ISO 12945-2 to 5.000 cycles)

• LIGHT FASTNESS / SOLIDITÀ ALLA LUCE

7, scale 1-8 (EN ISO 105-B02)

• WATER FASTNESS / SOLIDITÀ ALL'ACQUA

5, scale 1-5 (EN ISO 105-E01)

• FLAME RESISTANCE / RESISTENZA AL FUOCO

US CA TB 117-2013

Simil Leather

Finta Pelle

CATEGORY A / CATEGORIA A

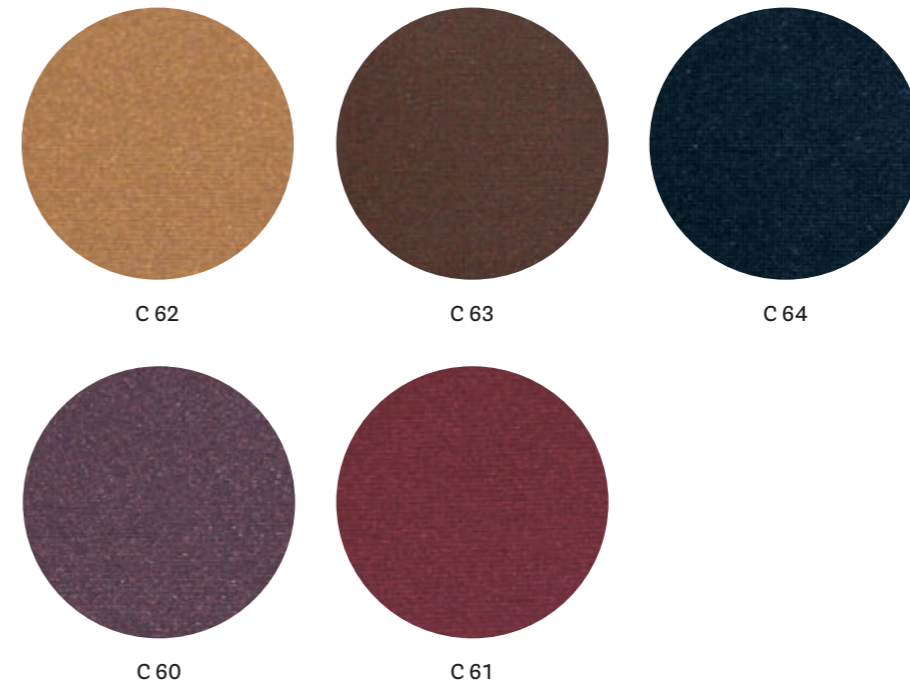


technical specifications / specifiche tecniche



- **COMPOSITION / COMPOSIZIONE**
85% PVC
15% Polyurethane
- **ABRASION / ABRASIONE**
50.000 cycles, Martindale
(EN ISO 12947-2)
- **RUBBING FASTNESS / SOLIDITÀ ALLO SFREGAMENTO**
Dry and Wet 4-5, scale 1-5
(EN ISO 105-X12)
- **FLAME RESISTANCE / RESISTENZA AL FUOCO**
US CA TB 117-2013 - Compliant to
the criteria certifying the absence of
flame retardant chemicals (AB 2998)
- **LIGHT FASTNESS / SOLIDITÀ ALLA LUCE**
6, scale 1-8
(EN ISO 105-B02)

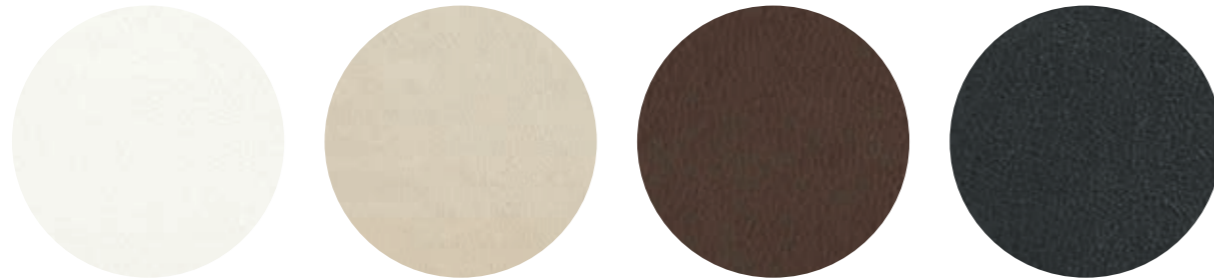
CATEGORY C / CATEGORIA C



technical specifications / specifiche tecniche



- **Metallic effect simil-leather**
Finta pelle effetto metallizzato
- **COMPOSITION / COMPOSIZIONE**
72% PVC
25% Cotton
3% Polyurethane
- **ABRASION / ABRASIONE**
50.000 cycles, Martindale
(EN ISO 5470-2)
- **RUBBING FASTNESS / SOLIDITÀ ALLO SFREGAMENTO**
Dry and Wet 4-5, scale 1-5
(EN ISO 105-X12)
- **LIGHT FASTNESS / SOLIDITÀ ALLA LUCE**
6, scale 1-8 (EN ISO 105-B02)
- **FLAME RESISTANCE / RESISTENZA AL FUOCO**
BS 5852-1 Part 1
EN 1021-2
IMO RESOLUTION A.652 (16): 1989
UNI 9175 Classe 1 IM
US CA TB 117-2013

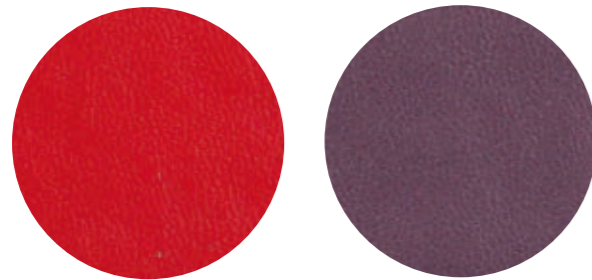


C 90

C 94

C 95

C 93



C 92

C 91

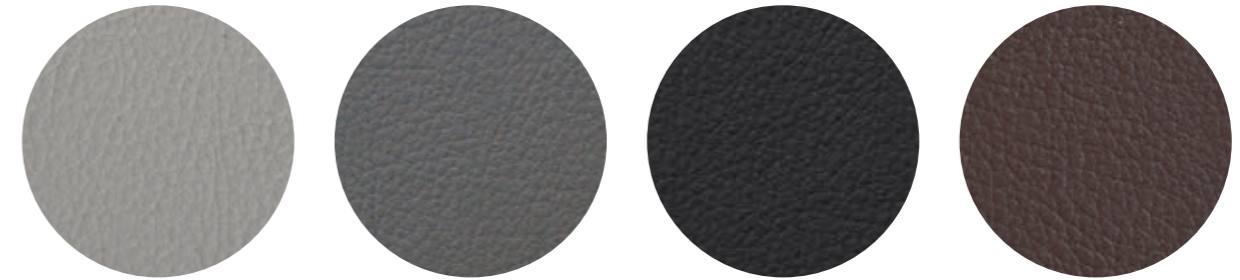
technical specifications / specifiche tecniche



- **COMPOSITION / COMPOSIZIONE**
72% PVC
25% Cotton
3% Polyurethane
- **ABRASION / ABRASIONE**
50.000 cycles, Martindale
(EN ISO 5470-2)

- **RUBBING FASTNESS / SOLIDITÀ ALLO SFREGAMENTO**
Dry and Wet 4-5, scale 1-5
(EN ISO 105-X12)
- **LIGHT FASTNESS / SOLIDITÀ ALLA LUCE**
6, scale 1-8 (EN ISO 105-B02)

- **FLAME RESISTANCE / RESISTENZA AL FUOCO**
BS 5852-1 Part 1
EN 1021-2
IMO RESOLUTION A.652 (16): 1989
UNI 9175 Classe 1 IM
US CA TB 117-2013



C 139

C 140

C 141

C 134



C 130

C 131

C 132

C 133



C 135

C 136

C 137

C 138

technical specifications / specifiche tecniche



- **COMPOSITION / COMPOSIZIONE**
76% PVC
22% PES
2% Polyurethane
- **ABRASION / ABRASIONE**
60.000 cycles, Martindale
(ISO 5470-2)

- **RUBBING FASTNESS / SOLIDITÀ ALLO SFREGAMENTO**
Dry and Wet 4-5, scale 1-5
(ISO 105-X12)
- **LIGHT FASTNESS / SOLIDITÀ ALLA LUCE**
6, scale 1-8 (ISO 105-B02)

- **FLAME RESISTANCE / RESISTENZA AL FUOCO**
BS 5852-1 match test
EN 1021 Part 1-2
UNI 9175 Classe 1 IM
US CA TB 117-2013

CATEGORY C / CATEGORIA C



technical specifications / specifiche tecniche



- COMPOSITION / COMPOSIZIONE
85% PVC
15% Cotton
- ABRASION / ABRASIONE
150.000 cycles, Martindale
(ISO 5470-2)
- LIGHT FASTNESS / SOLIDITÀ ALLA LUCE
≥6, scale 1-8 (EN ISO 105-B02)
- FLAME RESISTANCE / RESISTENZA AL FUOCO
B2 (DIN 4102)
BS 5852 Crib 5
EN 1021.1-2
EN 13501-1 - Cs3do
FAR 25853 App F Part 1
- IMO RESOLUTION A.652
NF D60-013 - AM 18
NFP 92503 M1
NY/NJ - Port Authority
UFAC Fabric Class 1
German fire standard B1 (except C12 and C22)
US CATB 117
US CATB 133

- APPROVED / OMOLOGATO



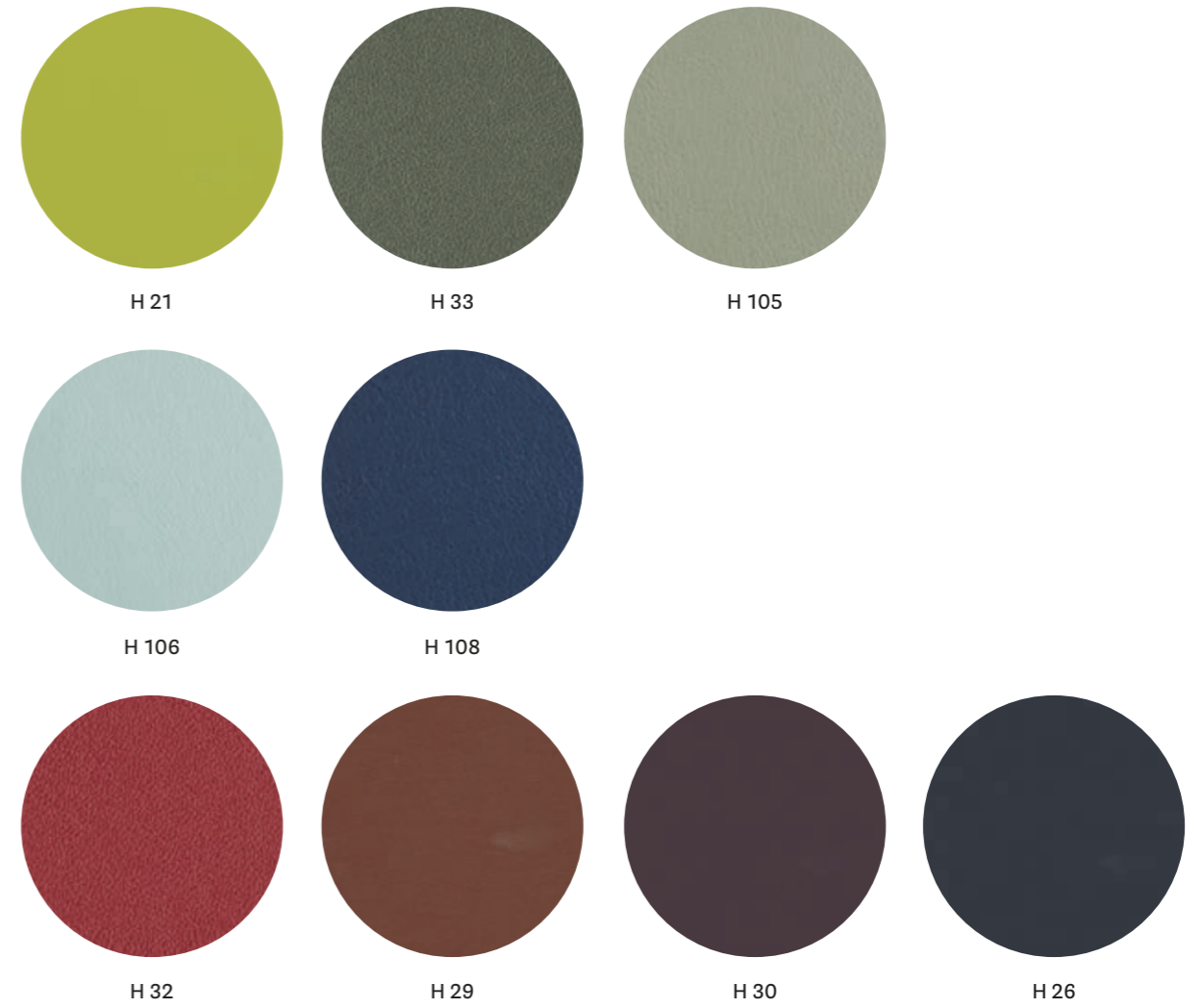
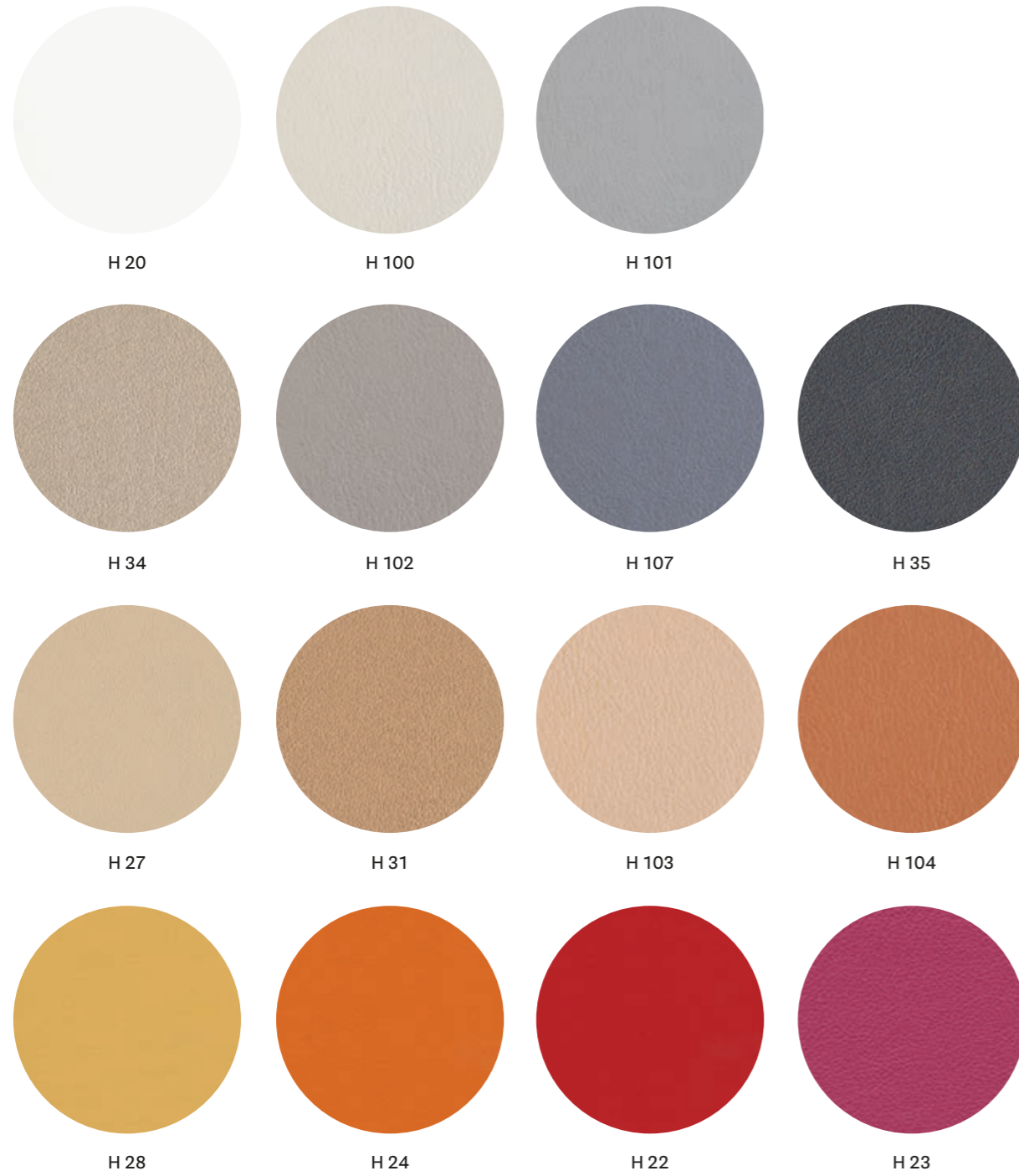
CATEGORY H / CATEGORIA H



technical specifications / specifiche tecniche



- Metallic effect simil-leather
Finta pelle effetto metallizzato
- COMPOSITION / COMPOSIZIONE
63% Polyurethane
29% Cotton
8% PES
- ABRASION / ABRASIONE
50.000 cycles, Martindale
(EN ISO 5470-2)
- LIGHT FASTNESS / SOLIDITÀ ALLA LUCE
5-6, scale 1-6 (EN ISO 105-B02)
- FLAME RESISTANCE / RESISTENZA AL FUOCO
BS 5852-1 cigarette test
- BS 5852-1 match test
BS 5852 crib 5
EN 1021-1
EN 1021-2
IMO FTP CODE 2010
TB 117:2013
UNI 9175 classe 1IM



technical specifications / specifiche tecniche



- COMPOSITION / COMPOSIZIONE
63% Polyurethane
29% Cotton
8% PES
- ABRASION / ABRASIONE
150.000 cycles, Martindale
(EN ISO 12947-2)

- LIGHT FASTNESS / SOLIDITÀ ALLA LUCE
5-6, scale 1-8 (EN ISO 105-B02)
- FLAME RESISTANCE / RESISTENZA AL FUOCO
BS 5852 Crib 5
EN 1021 Part 1-2
IMO resolution FTP Code 2010

IMO resolution A.652 (16):1989
UNI 9175 Classe 1 IM
US CA TB 117-2013 - Compliant to
the criteria certifying the absence of
flame retardant chemicals (AB 2998)

Leather Pelle

CATEGORY P / CATEGORIA P



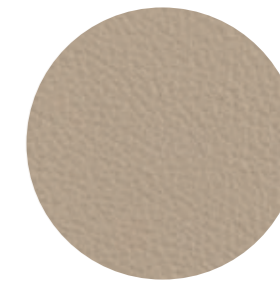
PBI



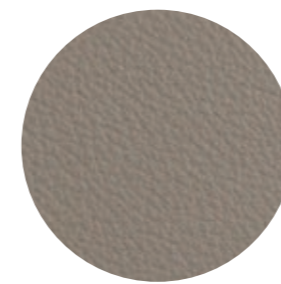
PLA



PGC



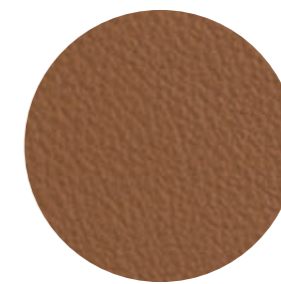
PSA



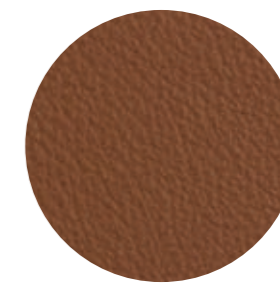
PGA



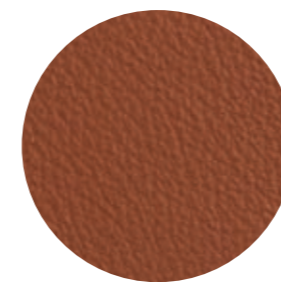
PBE



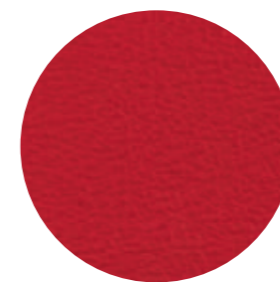
PGN



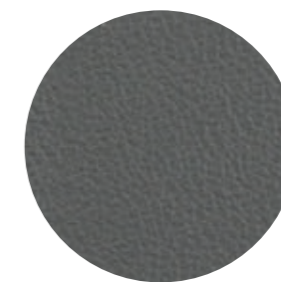
PTA



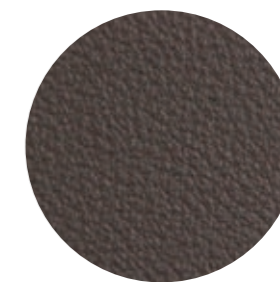
PTE



PRO



PGR



PMA



PNE

technical specifications / specifiche tecniche

• COLLECTION / COLLEZIONE



LINEA

• COMPOSITION / COMPOSIZIONE

Mid grain leather
Pelle mezzo fiore

• RUBBING FASTNESS / SOLIDITÀ ALLO SFREGAMENTO

Dry (500 Cycles) and
Wet (250 Cycles) ≥ 4
(EN ISO 11640:1998)

• LIGHT FASTNESS / SOLIDITÀ ALLA LUCE

≥ 5 (EN ISO 105 B02) (MET.5)

• FLAME RESISTANCE / RESISTENZA AL FUOCO

BS 5852:1979
BS EN 1021-1-2:2006
IMO RES A652 (16)
US CA TB 117-2013 -
Compliant to the criteria
certifying the absence
of flame retardant
chemicals (AB 2998)

cleaning / lavaggio

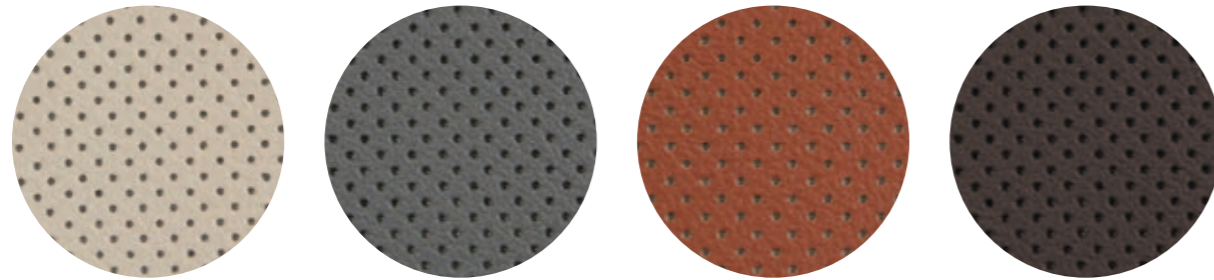
Clean with a damp
cloth using water. Do
not use detergents,
solvents, bleached,
abrasives.

Pulire con un panno
umido d'acqua. Non
usare detersivi, solventi,
candeggianti, abrasivi.

• APPROVED / OMOLOGATO



CATEGORY P / CATEGORIA P



PGCF

PGRF

PTEF

PMAF

technical specifications / specifiche tecniche

• COLLECTION / COLLEZIONE



• COMPOSITION / COMPOSIZIONE
Perforated mid grain leather
Pelle mezzo fiore traforata

• RUBBING FASTNESS / SOLIDITÀ ALLO SFREGAMENTO
Dry (500 Cycles) and Wet (250 Cycles) ≥ 4
(EN ISO 11640:1998)

• LIGHT FASTNESS / SOLIDITÀ ALLA LUCE
 ≥ 5 (EN ISO 105 B02) (MET.5)
• FLAME RESISTANCE / RESISTENZA AL FUOCO
BS 5852:1979
BS EN 1021-1-2:2006
IMO RES A652 (16)
US CA TB 117-2013 - Compliant
to the criteria certifying the
absence of flame retardant
chemicals (AB 2998)

cleaning / lavaggio

Clean with a damp cloth using water. Do not use detergents, solvents, bleached, abrasives.
Pulire con un panno umido d'acqua. Non usare detersivi, solventi, candeggianti, abrasivi.

• APPROVED / OMOLOGATO



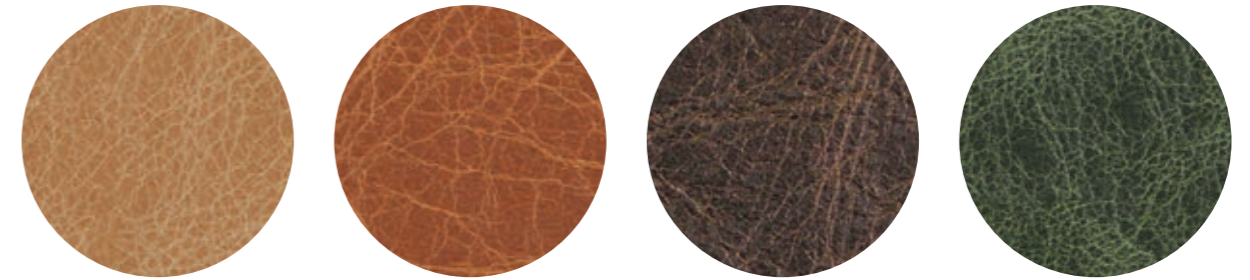
only for collections / solo per collezioni



Inner part of the back, upper part of the seat.
Lato interno dello schienale e parte superiore del sedile.

Vic / Vic Metal

CATEGORY P / CATEGORIA P



PBS

PCO

PMS

PVE

technical specifications / specifiche tecniche

• COLLECTION / COLLEZIONE



• COMPOSITION / COMPOSIZIONE
Vintage mid grain leather
Pelle mezzo fiore anticata

• Leather non-homogenous shade (vintage effect)
Pelle in tonalità non omogenea (effetto vintage)

• RUBBING FASTNESS / SOLIDITÀ ALLO SFREGAMENTO
Dry (50 Cycles) and Wet (20 Cycles) ≥ 3
(EN ISO 11640:1998)

• LIGHT FASTNESS / SOLIDITÀ ALLA LUCE
 $\geq 2/3$ (EN ISO 105-B02) (MET.5)

• FLAME RESISTANCE / RESISTENZA AL FUOCO
BS 5852:1979
BS EN 1021-1-2:2006
US CA TB 117-2013

cleaning / lavaggio

Clean with warm and damp cloth. Do not use detergents, solvents, bleached, abrasives.
Pulire con acqua calda e un panno umido. Non usare detersivi, solventi, candeggianti, abrasivi.

only for collections / solo per collezioni



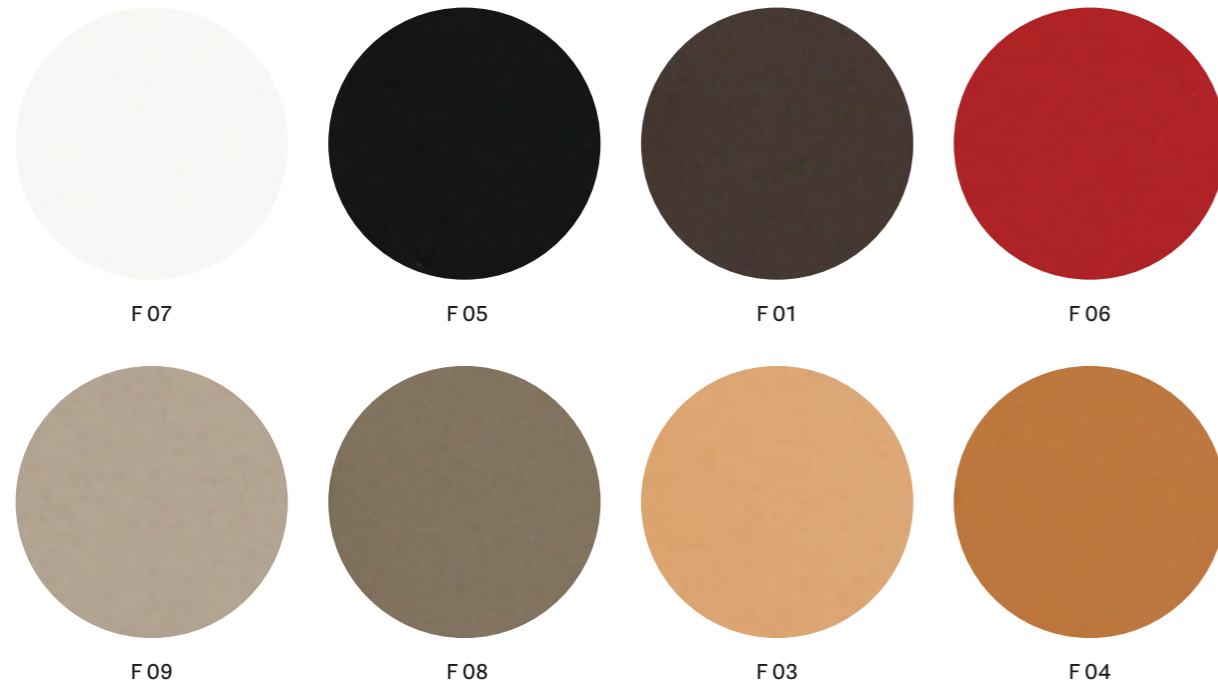
Malmö

Inga

Hard leather

Cuoio

CATEGORY F / CATEGORIA F



technical specifications / specifiche tecniche

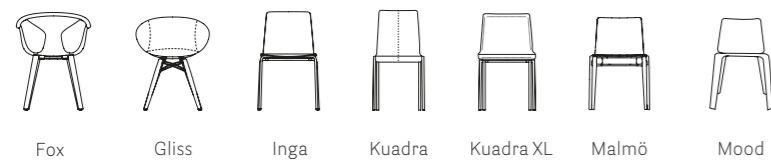
• **COMPOSITION / COMPOSIZIONE**
Genuine hard leather, tanned with vegetable substances.
 Cuoio naturale, conciato con sostanze vegetali.

- **RUBBING FASTNESS / SOLIDITÀ ALLO SFREGAMENTO**
Satisfactory up to maximum 700 abrasions in humid environment and 1000 abrasions in dry environment.
 Soddisfacente sino a max 700 abrasioni all'umido e 1000 abrasioni al secco.
- **FLAME RESISTANCE / RESISTENZA AL FUOCO**
US CA TB 117-2013 - Compliant to the criteria certifying the absence of flame retardant chemicals (AB 2998)

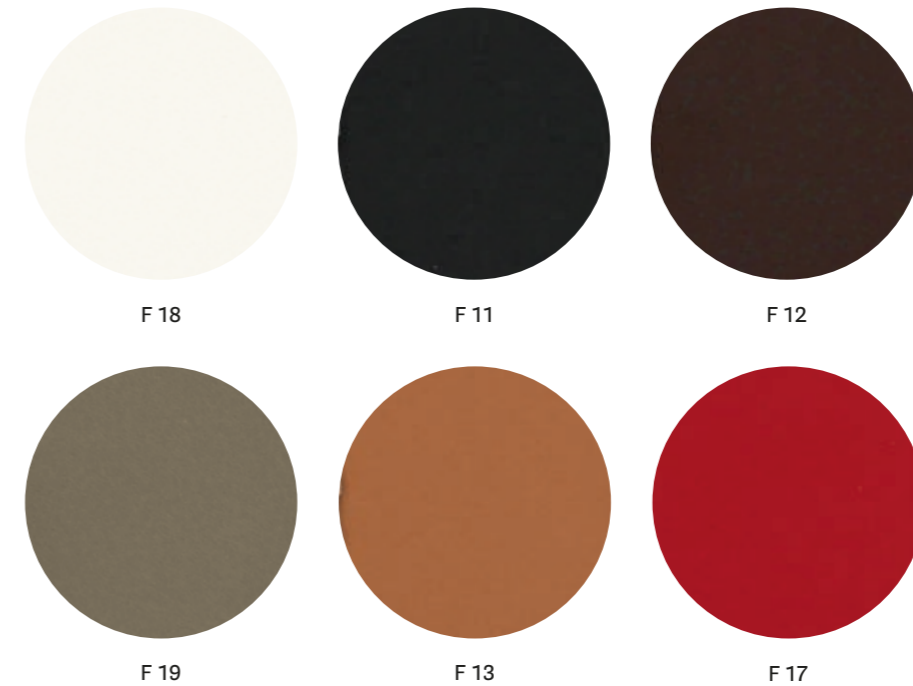
cleaning / lavaggio

Clean with a damp cloth using water.
 Pulire con un panno umido d'acqua.

only for collections / solo per collezioni



CATEGORY F / CATEGORIA F



technical specifications / specifiche tecniche

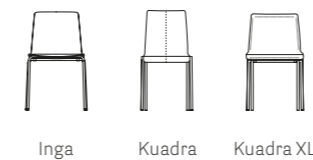
• **COMPOSITION / COMPOSIZIONE**
Regenerated hard leather. Tanned leather cuttings and shavings linked with natural rubber latex.
 Cuoio rigenerato. Ritagli e rasatura di cuoio conciato legati con lattice di gomma naturale.

- **RUBBING FASTNESS / SOLIDITÀ ALLO SFREGAMENTO**
Dry and wet >1000 (EN ISO 11640)
- **LIGHT FASTNESS / SOLIDITÀ ALLA LUCE**
4-5 Xenotest Method
- **FLAME RESISTANCE / RESISTENZA AL FUOCO**
BS EN 1021 1&2
BS 5852 Part 1
US CA TB 117 E Part 1

cleaning / lavaggio

Clean with a damp cloth using water.
 Pulire con un panno umido d'acqua.

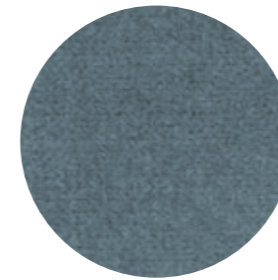
only for collections / solo per collezioni



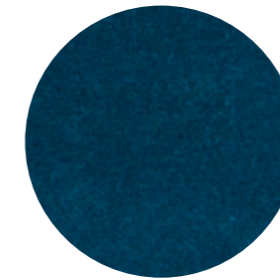
Velvet

Velluto

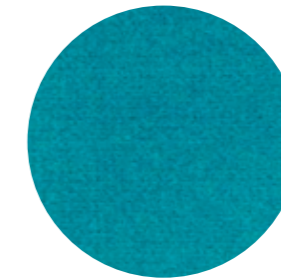
CATEGORY E / CATEGORIA E



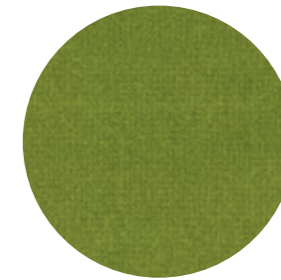
E 04



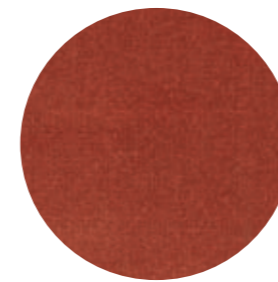
E 03



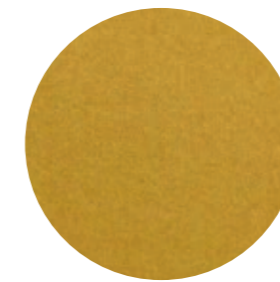
E 05



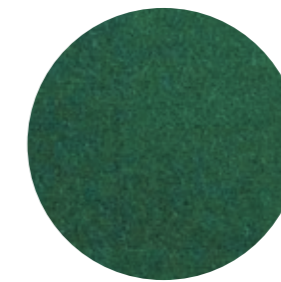
E 02



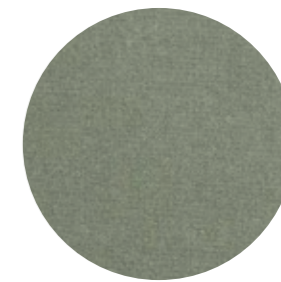
E 01



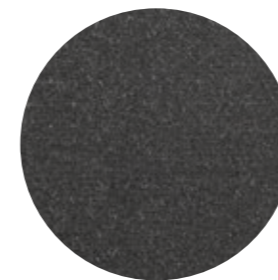
E 06



E 07



E 08



E 09

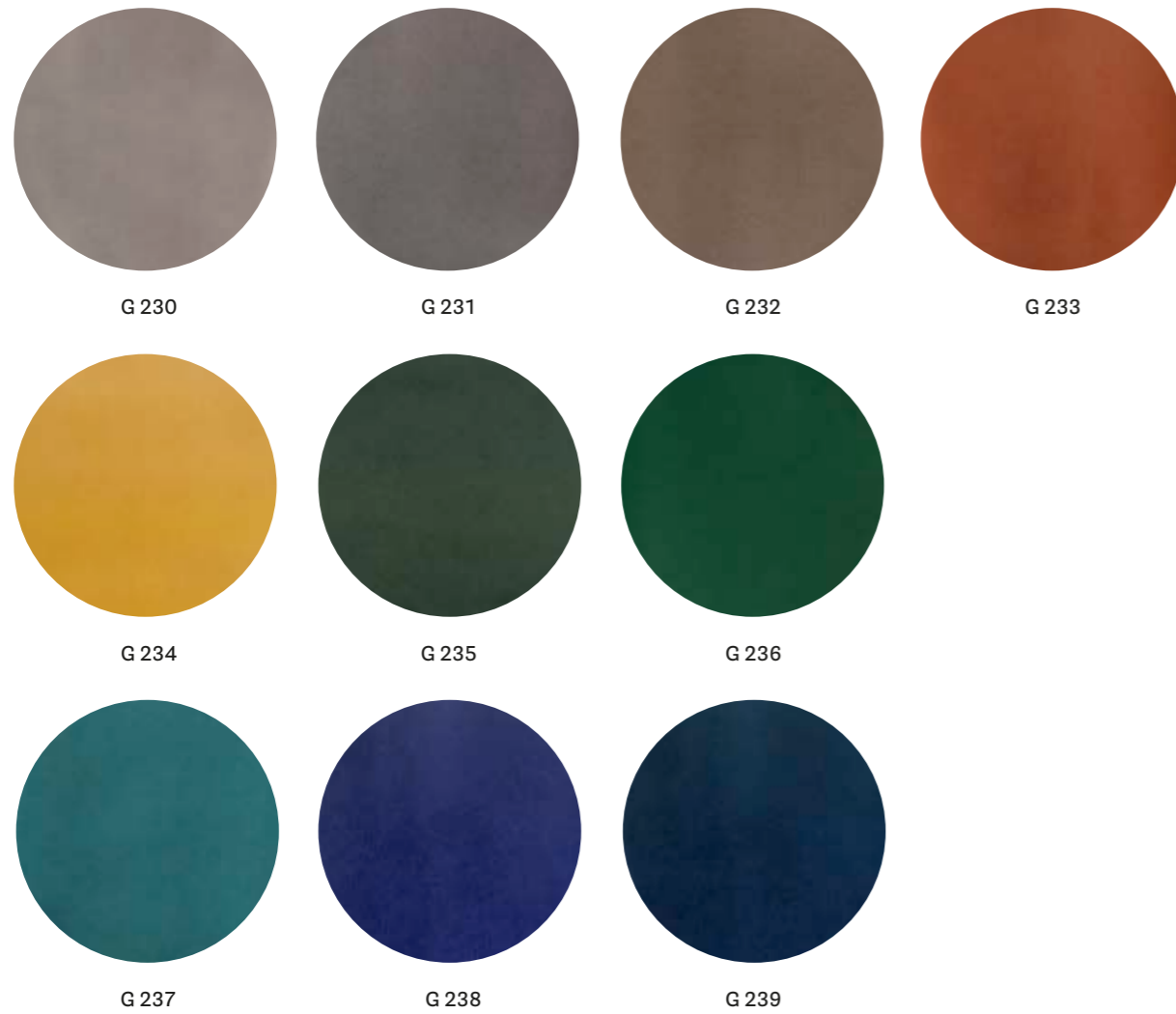
technical specifications / specifiche tecniche



- COLLECTION / COLLEZIONE
DEDAR
ADAMO & EVA
- COMPOSITION / COMPOSIZIONE
100% Cotton

- ABRASION / ABRASIONE
50.000 cycles, Martindale (ISO 12947-2)
- RUBBING FASTNESS / SOLIDITÀ ALLO SFREGAMENTO
Dry 4-5 and Wet 3-5, scale 1-5
(ISO 105-X12)

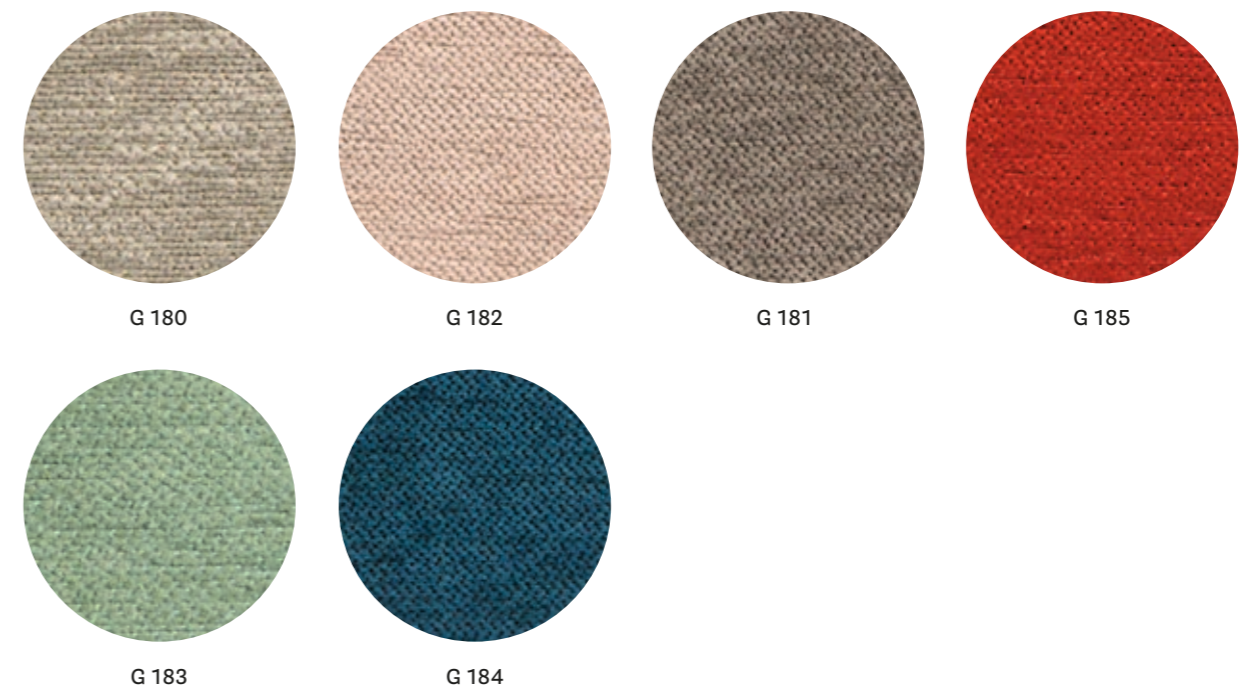
- LIGHT FASTNESS / SOLIDITÀ ALLA LUCE
4-6, scale 1-8 (ISO 105-B02)



technical specifications / specifiche tecniche



- COMPOSITION / COMPOSIZIONE
100% Cotton
- ABRASION / ABRASIONE
70.000 cycles, Martindale (ISO 12947-2)
- RUBBING FASTNESS / SOLIDITÀ ALLO SFREGAMENTO
Dry and Wet 4-5, scale 1-5 (ISO 105-X12)
- PILLING
5, scale 1-5 (ISO 12945-2)
- LIGHT FASTNESS / SOLIDITÀ ALLA LUCE
4-5, scale 1-8 (ISO 105-B02)
- SOUND ABSORPTION / ASSORBIMENTO ACUSTICO
folded: $\alpha_w = 0.75$ (EN ISO 354)
- FLAME RESISTANCE / RESISTENZA AL FUOCO
US CA TB 117-2013 - Compliant to the criteria certifying the absence of flame retardant chemicals (AB 2998)



technical specifications / specifiche tecniche

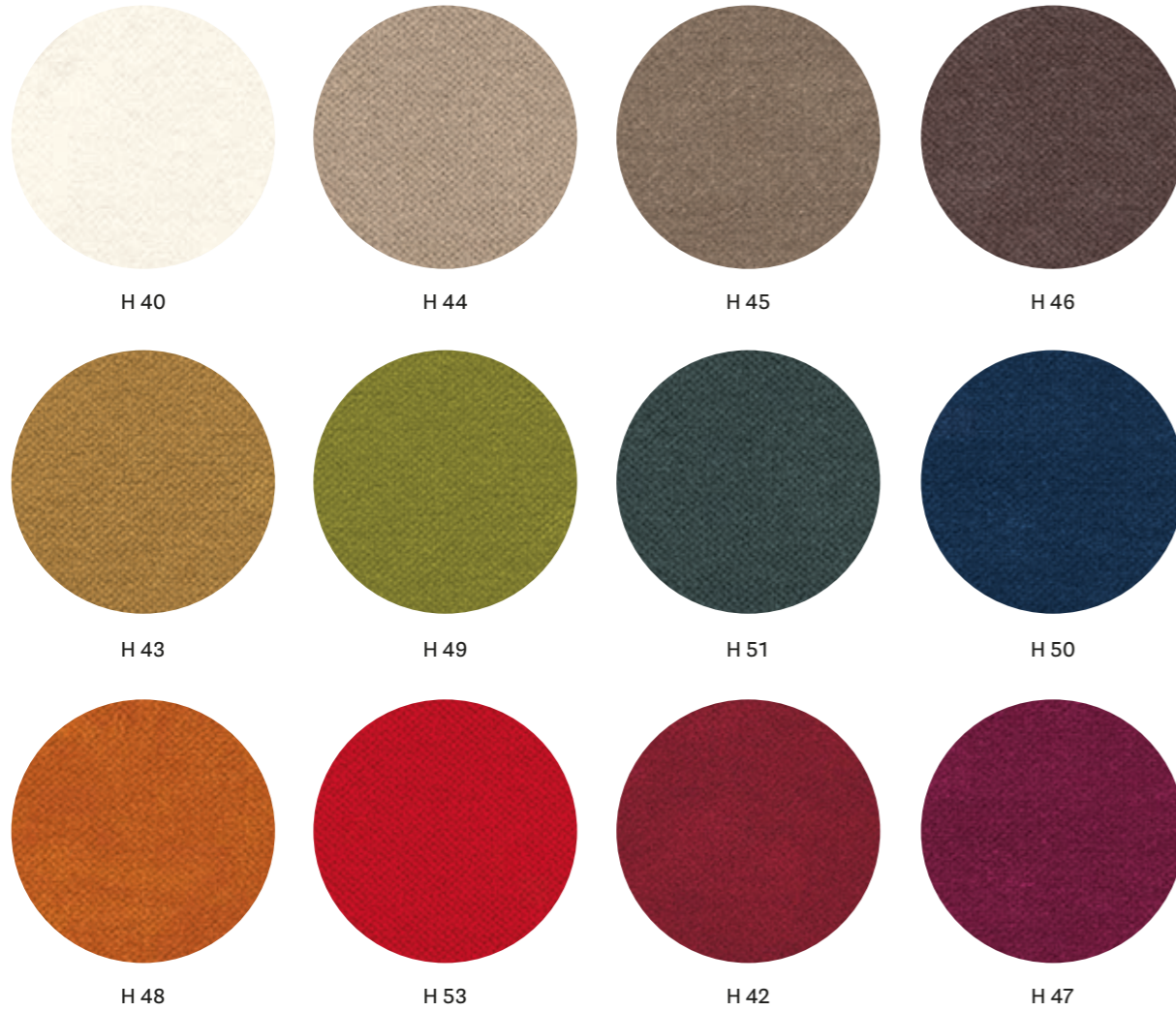


- COLLECTION / COLLEZIONE
kvadrat - STILL
DESIGNER Georgina Wright
- COMPOSITION / COMPOSIZIONE
100% TREVIRA CS®
- ABRASION / ABRASIONE
50.000 cycles, Martindale (EN ISO 12947)
- RUBBING FASTNESS / SOLIDITÀ ALLO SFREGAMENTO
Dry and Wet 4-5, scale 1-5 (EN ISO 105-X12)
- PILLING
4-5, scale 1-5 (EN ISO 12945)
- LIGHT FASTNESS / SOLIDITÀ ALLA LUCE
5-7, scale 1-8 (ISO 105-B02:2014)
- SOUND ABSORPTION / ASSORBIMENTO ACUSTICO
folded: $\alpha_w = 0.85$ Class B (ISO 11654)
- FLAME RESISTANCE / RESISTENZA AL FUOCO
ASTM E84 class A
BS 5852 Crib 5
BS 5852 Part 1
BS 5867 Part 2 type B
- DIN 4102 B1
EN 1021-1/2
EN 13501-1, B-S1, d0
IMO FTP Code 2010:Part 8
NF D60-013
NF P92 57 M1
NFPA 701
ÖNORM B1/Q1
SN 198 898 5.2
UNI 9175 Classe 1 IM
UNI 9177 Classe 1
US CA TB 117-2013

APPROVED / OMOLOGATO



CATEGORY H / CATEGORIA H



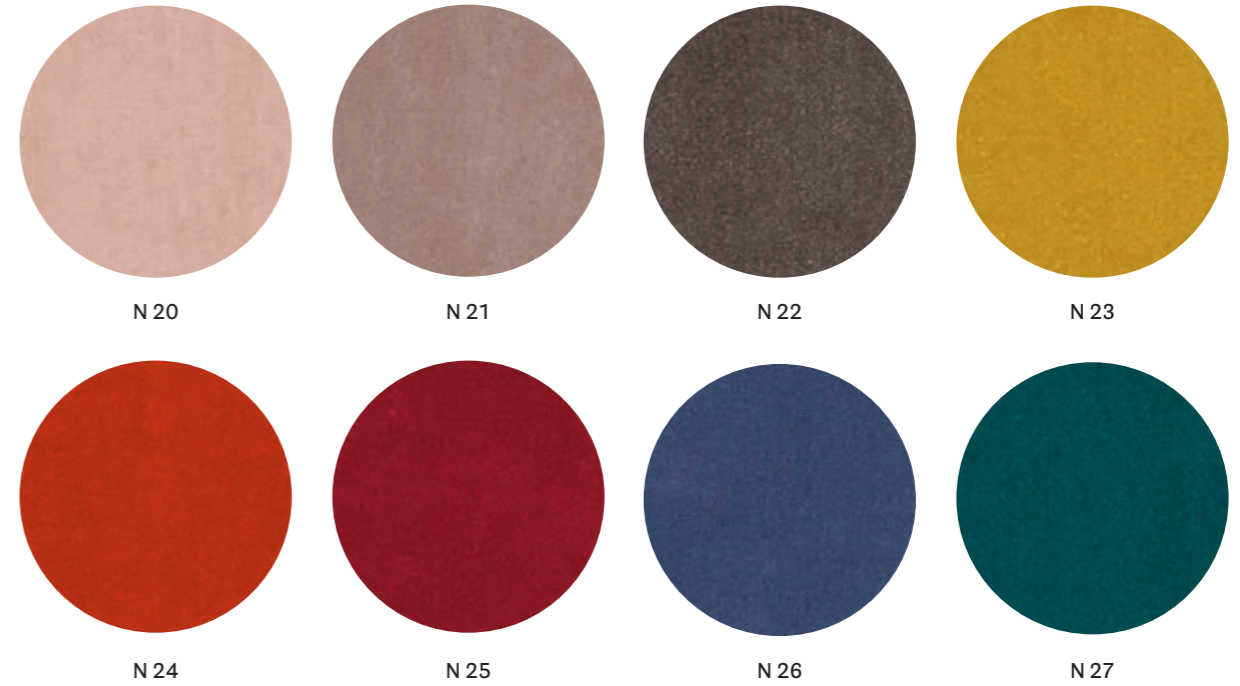
technical specifications / specifiche tecniche



H 41

- COMPOSITION / COMPOSIZIONE
100% TREVIRA CS®
- ABRASION / ABRASIONE
190.000 cycles, Martindale
(EN ISO 12947-2)
- RUBBING FASTNESS / SOLIDITÀ ALLO SFREGAMENTO
Dry and Wet 4-5, scale 1-5
(EN ISO 105-X12)
- PILLING
5, scale 1-5 (EN ISO 12945-2)
- LIGHT FASTNESS / SOLIDITÀ ALLA LUCE
5, scale 1-8 (EN ISO 105-B02)
- SOUND ABSORPTION / ASSORBIMENTO ACUSTICO
folded: $\alpha_w = 0.70$ (EN ISO 354:2003)
- FLAME RESISTANCE / RESISTENZA AL FUOCO
BS 5852 Part 0,1
DIN 4102 B1
EN 1021-1&2
IMO MSC 307(88) Annex 1 Part 7-8
NF P 92-503-507 M1
NFPA 260:2019
UNI 9177 Classe 1
UNI 9175 Classe 1 IM
US CA TB 117-2013

CATEGORY N / CATEGORIA N



technical specifications / specifiche tecniche



- COLLECTION / COLLEZIONE
kvadrat-SAHCO
BALBOA
DESIGNER Najberg
- COMPOSITION / COMPOSIZIONE
100% Polyester FR
- ABRASION / ABRASIONE
100.000 cycles, Martindale
(EN ISO 12947)
- RUBBING FASTNESS / SOLIDITÀ ALLO SFREGAMENTO
Dry 5 and Wet 4-5, scale 1-5
(EN ISO 105-X12)
- PILLING
4, scale 1-5
(EN ISO 12945-2)
- LIGHT FASTNESS / SOLIDITÀ ALLA LUCE
4-6, scale 1-8
(EN ISO 105-B02)
- SOUND ABSORPTION / ASSORBIMENTO ACUSTICO
folded: $\alpha_w = 0.80$ Class B
(ISO 11654)
- FLAME RESISTANCE / RESISTENZA AL FUOCO
BS 5852 Crib 5
BS 5867 Part 2 Type B
DIN 4102 B1
EN 1021-1/2
IMO FTP Code 2010: Part 8
NFPA 701
ÖNORM B1/Q1
SN 198 898 5.2
UNI 9175 1IM
US Cal. Bull. 117-2013

APPROVED / OMOLOGATO



Powder coated cast-iron, steel and aluminium

Ghisa, acciaio
e alluminio verniciati

Indoor

TEXTURED MATT / GOFFRATA OPACA



BI100
White / Bianco



BI200
White / Bianco



BE100
Beige / Beige



BE200
Beige / Beige



SA100
Sand / Sabbia



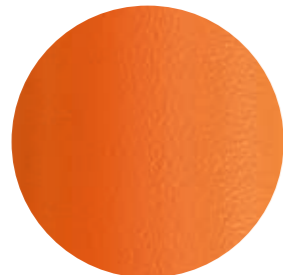
SA200
Sand / Sabbia



RA100
Pink / Rosa



GI100
Yellow / Giallo



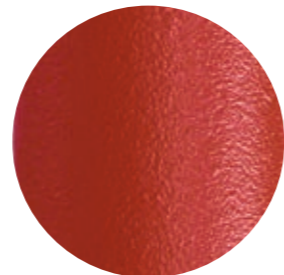
AR200
Orange / Arancio



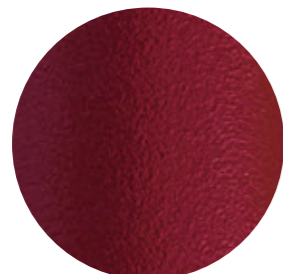
AR400
Orange / Arancio



AR500
Orange / Arancio



RO200
Red / Rosso



RO300
Red / Rosso



RO400
Red / Rosso

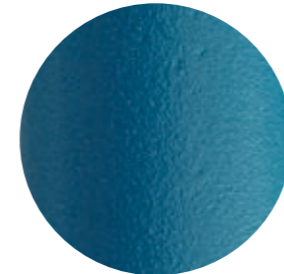


TE
Terracotta / Terracotta

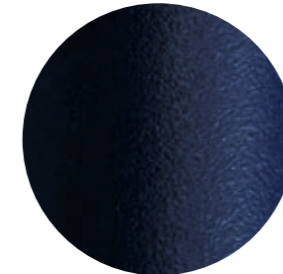


RU
Rust / Ruggine

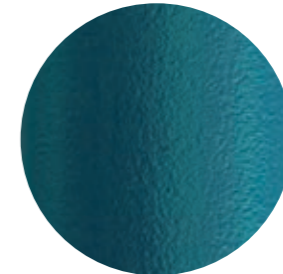
TEXTURED MATT / GOFFRATA OPACA



BL300
Blue / Blu



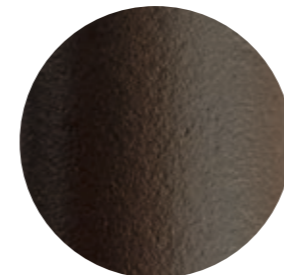
BL400
Blue / Blu



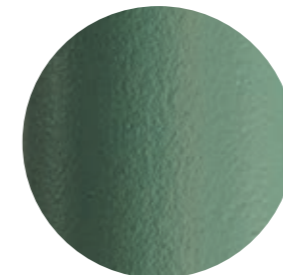
BL500
Blue / Blu



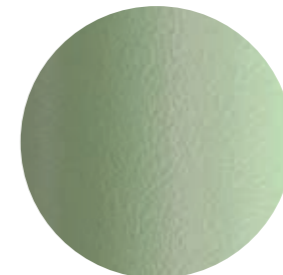
AZ100
Light blue / Azzurro



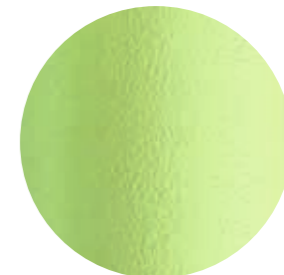
MG
Brown / Marrone



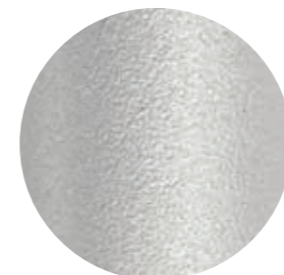
VE600
Green / Verde



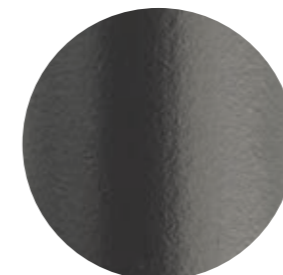
VE100
Sage green / Verde salvia



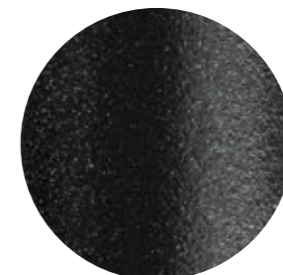
VE400
Green / Verde



AG
Aluminium / Alluminio

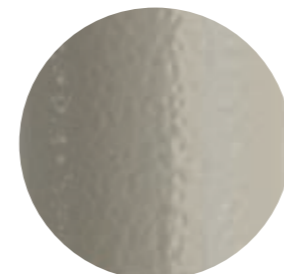


GA
Anthracite grey / Grigio antracite



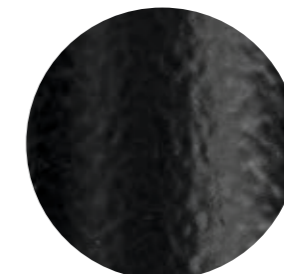
GN
Natural grey / Grigio naturale

HAMMERED GLOSSY / BUCCIATA LUCIDA



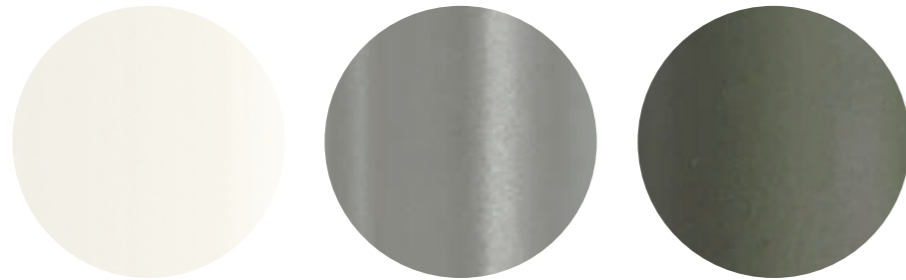
SA300
Sand / Sabbia

HAMMERED MATT / BUCCIATA OPACA



_NERO
Black / Nero

SMOOTH MATT / LISCIA OPACA

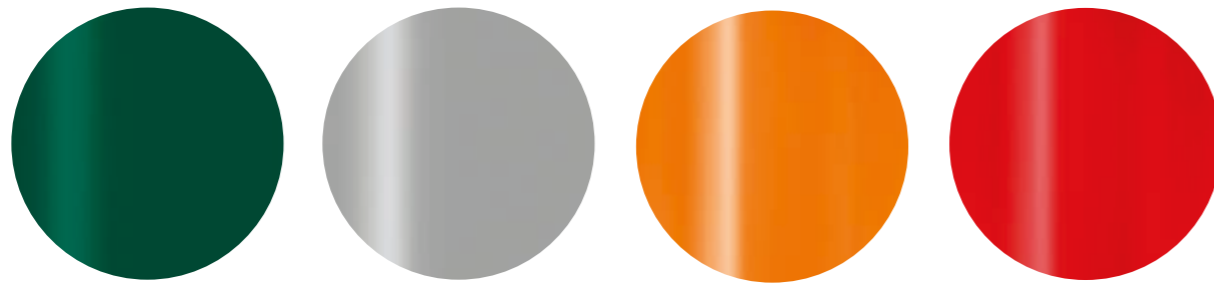


BI300
White / Bianco

9007
Aluminium / Alluminio

VE300
Forest green / Verde bosco
Soft touch

SMOOTH GLOSSY / LISCIA LUCIDA

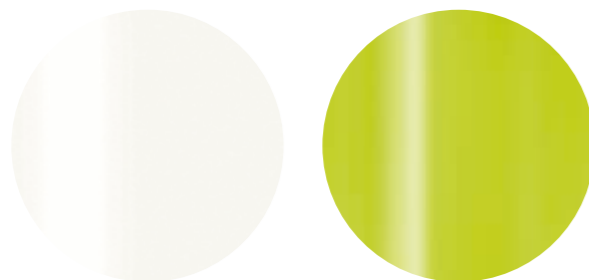


6005
Green / Verde

AL
Aluminium / Alluminio

AR300
Orange / Arancio

RO100
Red / Rosso



BI400
White / Bianco

VE200
Green / Verde



Outdoor

TEXTURED MATT / GOFFRATA OPACA



BI100E
White / Bianco

BI200E
White / Bianco

BE100E
Beige / Beige

BE200E
Beige / Beige

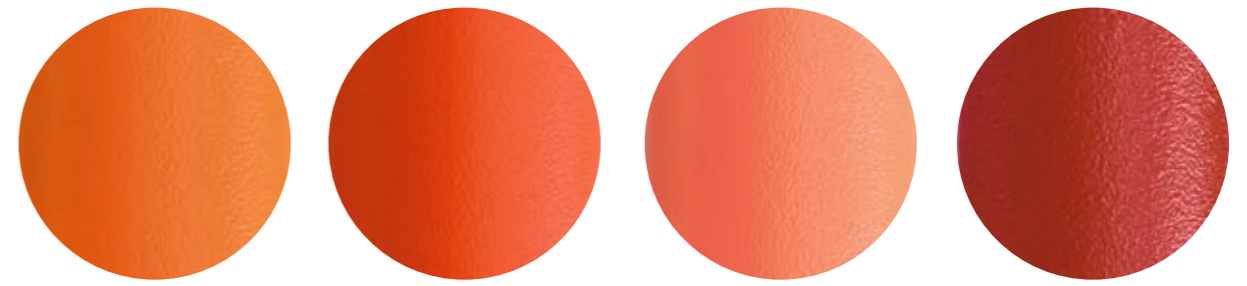


SA100E
Sand / Sabbia

SA200E
Sand / Sabbia

RA100E
Pink / Rosa

GI100E
Yellow / Giallo

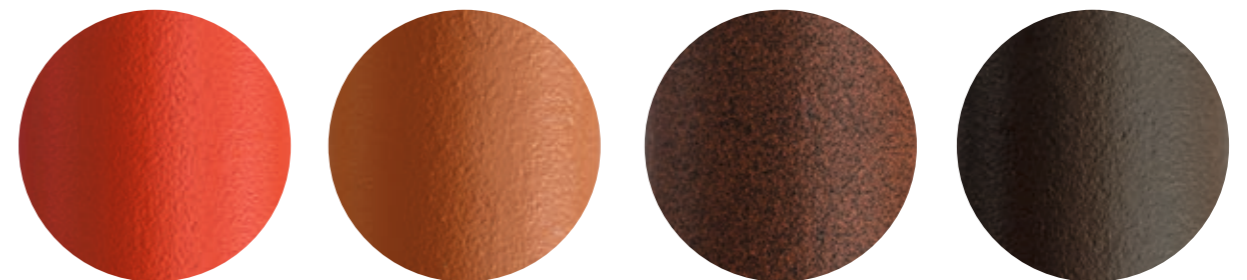


AR200E
Orange / Arancio

AR400E
Orange / Arancio

AR500E
Orange / Arancio

RO200E
Red / Rosso



RO400E
Red / Rosso

TEE
Terracotta / Terracotta

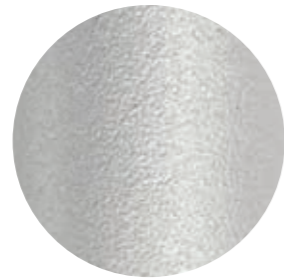
RUE
Rust / Ruggine

MGE
Brown / Marrone

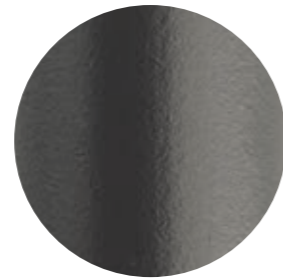
TEXTURED MATT / GOFFRATA OPACA



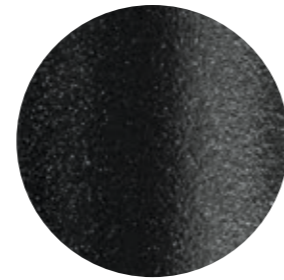
NPE
Black / Nero



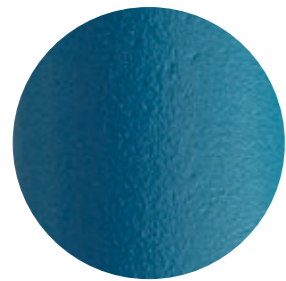
AGE
Aluminium / Alluminio



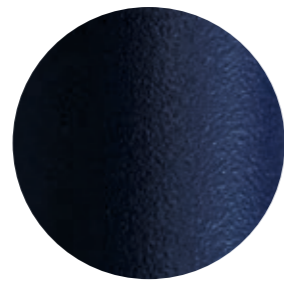
GAE
Anthracite grey / Grigio antracite



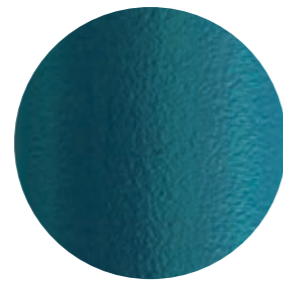
GNE
Natural grey / Grigio naturale



BL300E
Blue / Blu



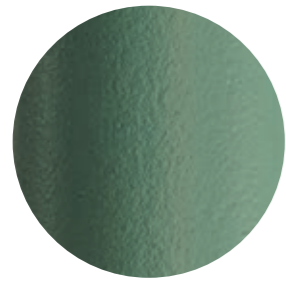
BL400E
Blue / Blu



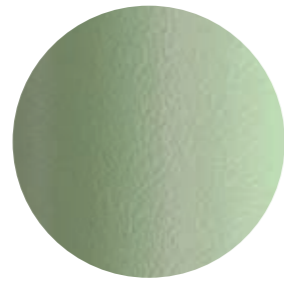
BL500E
Blue / Blu



AZ100E
Light blue / Azzurro

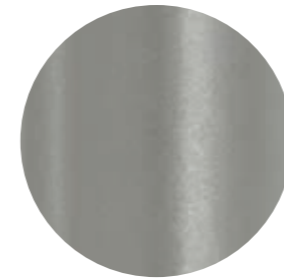


VE600E
Green / Verde



VE100E
Sage green / Verde salvia

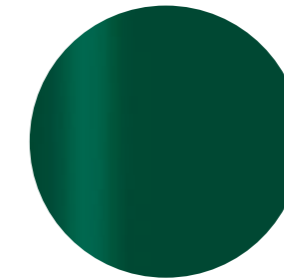
SMOOTH MATT / LISCIA OPACA



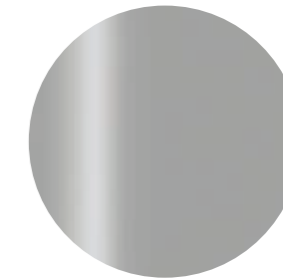
9007E
Aluminium / Alluminio



BI300E
White / Bianco



6005E
Green / Verde



ALE
Aluminium / Alluminio



VE300E
Forest green / Verde bosco
Soft touch

SMOOTH GLOSSY / LISCIA LUCIDA



Pedrali Finishes | Edition 2023

Print Intese Grafiche
Copyright © 2023, Pedrali S.p.A. All rights reserved



Weights, measurements and colours are indicative. Pedrali reserves the right to modify or upgrade the products without prior notice.

Pesi, dimensioni e colori sono indicativi. Pedrali si riserva la facoltà di apportare modifiche o migliorie senza alcun preavviso.

Industrial property right | Diritto di proprietà industriale

The contents of the present catalogue such as, by way of example, the works, the images, the pictures, the documents, the drawings, the forms, the logos and all other materials, published in any format, are worldwide protected by copyrights and any other industrial intellectual property right of Pedrali.

I contenuti del presente catalogo, quali, a titolo esemplificativo, le opere, le immagini, le fotografie, i documenti, i disegni, le figure, i loghi ed ogni altro materiale, in qualsiasi formato, pubblicato sono protetti a livello mondiale dal diritto d'autore e da ogni altro diritto di proprietà intellettuale di PEDRALI.